

NATIONAL WESTERN STOCK SHOW  
JANUARY 8-23, 2022

@NWSSHORSEEXHIBITORS  
@NATIONALWESTERN



HORSE PREMIUM LIST



# Equestrian Youth Opportunities

## Youth Equestrian Showcase scholarship program

Recognizing and supporting our local equestrian youth by involving them in the educational opportunities of the NWSS.

- 🐾 Ages 14-21
- 🐾 Colorado or Wyoming residents
- 🐾 Involved in the equine industry

Finalists will interview, create a goal accomplishment video, complete an educational display and volunteer at NWSS.

## Youth Freestyle Reining Showcase

Allowing local youth in the equine industry the opportunity to showcase their talents in freestyle reining and be recognized during a prestigious event at the NWSS.

- 🐾 Ages 14-21
- 🐾 Colorado or Wyoming residents
- 🐾 Riders showing talent in freestyle reining

Selected youth will perform a freestyle reining routine prior to the RAM Invitational Freestyle Reining.



## Youth Ranch Horse Mentor Matchup scholarship program

Providing an opportunity for local equestrian youth to learn and compete during the NWSS through hands-on educational activities with their equine partner and top professionals.

- 🐾 Ages 14-21
- 🐾 Colorado or Wyoming residents
- 🐾 Riders showing talent in ranch horse events

Selected riders will practice one-on-one with their coach before competing for scholarships.

## Junior Apprentice Committee

Providing professional, hands-on experience to local equestrians by involving them in the networking and educational opportunities of the NWSS.

- 🐾 Ages 18+
- 🐾 Colorado or Wyoming residents
- 🐾 Interested in shadowing the staff and committees during the planning, decision and execution phases.

An introduction to career and volunteer opportunities within the equine industry.

*Details, applications and deadlines at [nationalwestern.com](http://nationalwestern.com)*

NATIONAL  
WESTERN®  
*Stock Show*



Douglas L. Jones  
Chairman

Barth Whitham  
Vice Chairman

Paul Andrews  
President & CEO

Mark Gustafson  
Secretary

Bruce Wagner  
Treasurer

Terrance Carroll  
Member

Pete Coors  
Chairman, Capital  
Campaign

Sue Anschutz-Rodgers  
Member

Justin Cumming  
Member

Don Elliman  
Member

Brooke Fox  
Member

Dr. Tony Frank  
Member

Patrick Grant  
Chairman Emeritus

George Hutchison  
Member

Michael Long  
Member

Guy McEndaffer  
Member

Nancy Tuor  
Member

Ron Williams  
Former Chairman,  
Member

John Ellis  
Sr. Staff Vice-President of  
Strategic Partnerships

Kyle Baun  
Staff Vice President of  
Ticket and Event Sales

Jeff Childs  
Staff Vice-President of  
Finance

Clint Chitsey  
Staff Vice President of  
Event Operations

Leon Vick  
Staff Vice-President of  
Rodeo, Horse and  
Livestock Operations



EDUCATING YOUTH  
(A Non-Profit Corporation)

Dear Exhibitors and Fellow Supporters of the National Western Stock Show:

The 116<sup>th</sup> National Western Stock Show is back. Back in the saddle, back in full swing, and back to business! The 2022 Stock Show promises to showcase all your favorite western traditions, events, and activities, plus this January marks the highly anticipated unveiling of the newly constructed Cille and Ron Williams Yards. Embodying the unique and iconic traditions of the Denver stockyards, these Yards now stretch across 20 acres of the historic site. In addition, the new HW Hutchison Family Stockyards Event Center will open, which contains areas for show rings and a 600+ seat auction arena.

The National Western Center development continues to make strides in designing the new Equestrian Center. The pandemic significantly impacted the funding source for this facility. The city is working closely with NWSS staff to determine the new phasing plan and timing for completing this vital facility.

Our horse exhibitors and the ag community continue to be a centerpiece of this 116-year-old tradition, and we remain more committed than ever to our organizational mission:

*Investing in future generations, guided by its western heritage,  
Western Stock Show Association serves the world, promoting  
youth and community development through livestock and  
equestrian education, innovation, entertainment, and  
competition.*

Without a doubt, we have experienced a time that tests the resilience of agriculture industries and businesses throughout the world. Your passion, participation, and support allow us to endure these historical times and come out stronger than before.

Thank you for your participation and continued support of the National Western Stock Show on behalf of our members, trustees, board of directors, and staff.

Best wishes and continued success,

Paul Andrews  
President & CEO

4655 Humboldt Street, Denver, Colorado 80216-2818  
Phone (303) 297-1166 Fax (303) 292-1708

[nationalwestern.com](http://nationalwestern.com)

# TABLE OF CONTENTS

01	Welcome
03	NWSS Vision, Mission, Values
04	NWSS Staff, Board of Directors & Trustees
05	NWSS Horse Show Officials & Committees
07	NWSS Scholarship Trust & Denver Scholarship Program
08	National Western Complex Biosecurity Information
09	Arrival & Release Schedule
09	Feed & Bedding
11	Rules & Regulations
20	International Association of Fairs & Expos Code of Show Ring Ethics
22	National Western Center Information
23	Tentative Horse Show Schedule
27	Youth Ranch Horse Mentor Matchup
28	Invitational Ranch Rodeo
30	NRHA \$25,000 RAM Invitational Freestyle Reining
31	Youth Freestyle Reining Showcase
32	AQHA Quarter Horse & APHA Paint Horse Division
34	NRCHA Reined Cow Horse Division
37	USEF & USHJA Hunter/Jumper Division
39	Hunter Division
42	Equitation Division
42	Jumper Division
46	Horseman's Challenge
51	NASMDA Mule & Donkey Division
53	National Western Complex Biosecurity Information
55	Draft Horse Division
60	Pulling Contest
61	North American Livestock Show & Rodeo Managers Association
64	Advertisers Index





# NATIONAL WESTERN<sup>®</sup>

## *Stock Show*

Est. 1906



### *Vision –*

Guided by its western heritage, the Western Stock Show Association engages, informs and leads the world in finding 21st century agricultural solutions to global challenges.



### *– Mission*

Investing in future generations, guided by its western heritage, the Western Stock Show Association serves the world, promoting youth, adult and community development through livestock and equestrian education, innovation, entertainment and competition.



### *Values –*

integrity | diversity | partnership | community | quality | stewardship

Visit [nationalwestern.com/about](http://nationalwestern.com/about) for more information about the WSSA and NWSS.



# WESTERN STOCK SHOW ASSOCIATION

A non-profit organization incorporated under the laws of the State of Colorado for the encouragement and improvement of the livestock industry, and for the educational development of young people

## WSSA STAFF

Paul Andrews - President & CEO  
Kyle Baun - Staff VP of Ticket & Event Sales  
Jeff Childs - Staff VP of Finance  
Leon Vick - Staff VP of Rodeo, Horse & Livestock Ops

John Ellis - Staff VP Strategic Partnerships  
Clint Chitsey - Staff VP of Event Operations  
Karen Woods - Sr. Director of Marketing  
Kendra McConnell - Horse Show Manager

## BOARD OF DIRECTORS

Douglas L. Jones - Chairman of the Board  
Barth Whitham - Vice Chairman  
Paul Andrews - President & CEO  
Mark A. Gustafson - Secretary  
Bruce Wagner - Treasurer  
Pete Coors - Chairman, Capital Campaign  
Sue Anschutz-Rodgers - Director  
Terrance Carroll - Director  
Justin Cumming - Director  
Don Elliman - Director

Brooke Fox - Director  
Dr. Tony Frank - Director  
G. "Buck" Hutchison - Director  
Michael Long - Director  
Guy McEndaffer - Director  
Nancy Tuor - Director  
Ron Williams - Director  
Patrick A. Grant - Chairman Emeritus  
Dr. G. Marvin Beeman - Director Emeritus

## TRUSTEES

### Term Ending 2022:

David Ames  
Mark Anderson  
Rye Austin  
Glenn Benjamin  
Randall Blach  
Sharon Magness Blake  
Art Bosworth  
Dana Klapper Cohen  
Pete Crow  
Christopher Davis  
Crisanta Duran  
John Freyer Jr.  
Stacy Kourlis Guillion  
Maggie Hanna  
Khadija Haynes  
Heath Hutchison  
Corinne Hummel  
Glen E. Keller, Jr.  
Tom Kourlis, Sr.  
Andy Love  
Steve McCarthy  
Amy Parsons  
Ann Pritzlaff-Walker  
Colette P. Ratcliff  
Kenny Rogers  
W. Richard Scarlett  
Alan Sears  
David Sogge  
Alice Stephens  
Roberto Torres  
Bill Waneka  
Stow L. Witwer, Jr.

### Term Ending 2023:

Jo Adams  
Paul Andrews  
Chase Boswell  
Tom Bradbury Jr.  
Larry Burgess  
Jim Cage  
Brown Cannon, Jr.  
Cathy Carpenter Dea  
Pamela Coe  
Cristal DeHerrera  
Jerry Diaz  
Dan Green  
Virgil Holtgrewe  
Leslie Lange  
Chancy Love  
Kevin McMahon  
John Matsushima  
Dick Monfort  
Dorothy Nepa  
Denise O'Leary  
Fred Orr  
Rick Pederson  
Totsy Rees  
Larry Romrell  
Edward W. Serrell, Jr.  
Bob Tointon  
Tim Travis  
Carrie Coors Tynan

### Term Ending 2024:

Robert Alexander  
J.J. Ament  
Steve Bangert  
Mark Beauprez  
Hank Brown  
Chris Castilian  
Bob Dineen  
Ben Duke III  
George Eidsness  
Joey Freund  
Erik Glenn  
Cammie Grant  
Skylar Houston  
Blake Hutchison  
Mark Honnen  
Jeff Keller  
Luke Lind  
Richard J. Maxcy  
Charles K. Monfort  
Bronwyn Pepple  
Hugh Rice  
Charles Scoggin  
Wes A. Segelke  
Mike Shaw  
Pat Shaw  
Kent Stevinson  
Chuck W. Sylvester  
Don Thorn  
Kelly Tisher  
Hank True  
Court Wold

### TRUSTEES EMERITUS

Kay DeLine  
Del Hock

Nick Mathers  
Barb Page

Joseph W. Trahan, Jr.

# OFFICIALS & COMMITTEES

The 2022 National Western Horse Show is held under the governance of the Western Stock Show Association doing business as the National Western Stock Show.

In presenting the following classification and prize lists, Show Management retains the right to make such changes in the classes as it may deem necessary for the success of the exhibition.

National Western Stock Show leadership strives to produce the highest level of equestrian events and competitions each January. Every judge selected is done so with the utmost ethical and honorable standards, only placing ribbons upon the horses as seen in the ring, without regard to previous records of performance of such animals. Show Management and staff handle each exhibitor equitably and, in return, ask for exhibitors' cooperation and support to make the show a continued success.

## HORSE SHOW OFFICIALS

Division-specific officials who have been invited to officiate the 2022 National Western Stock Show are listed in this premium list on the appropriate pages. The Management reserves the right to change or substitute as necessary.

### OFFICIAL ADDRESS AND PHONE NUMBER

National Western Stock Show  
4655 Humboldt Street  
Denver, CO 80216-2818  
(303)299-5525 or (800)336-6977 ext. 5525  
Main Fax: (303)292-1708  
Horse Show Fax (during show): (303)299-5526  
[www.NationalWestern.com](http://www.NationalWestern.com)

### OFFICIAL VETERINARIAN

Littleton Equine Medical Center  
8025 South Santa Fe Drive  
Littleton, CO 80120  
(303)794-6359

### OFFICIAL PHOTOGRAPHERS/VIDEOGRAPHER

Casey McBride Photography Performance Horse Photography Horse & Country TV  
[www.caseymcbride.com](http://www.caseymcbride.com) [www.performancehorsephotography.com](http://www.performancehorsephotography.com) [www.horseandcountry.tv](http://www.horseandcountry.tv)

## HORSE SHOW COMMITTEES

### HORSE EXECUTIVE COMMITTEE

Leslie Lange, Chairman  
Paul Andrews  
Dr. G. Marvin Beeman  
Liza Dennehy  
Don Manuello  
Darren Miller  
Dr. Kelly Tisher  
John Weaver

### HORSE JUDGES COMMITTEE

Dr. G. Marvin Beeman, Chairman  
Rose Goodman  
Don Manuello  
Amy Uniss-Coleman

### HORSE ADVISORY COMMITTEE

Don Manuello, Chairman  
Dr. G. Marvin Beeman  
Martin Cockriel  
Liza Dennehy  
Joey Freund  
Leslie Lange  
Kirk Messenger  
Nancy Nemmers  
Dr. Steve Schwartzberger  
Dr. Terry Swanson  
Terri Wagner  
Marvin J. Witt

### ANIMAL HEALTH, CARE & USE COMMITTEE

Dr. Keith Roehr, Chairman  
Dr. G. Marvin Beeman  
Dr. Gary Carpenter  
Binion Cervi  
Dr. Bernie Rollin  
Dr. Mike Scott  
Chuck Sylvester  
Marvin J. Witt

A woman with long blonde hair, wearing a light-colored cowboy hat, a patterned long-sleeved shirt, a brown leather belt with a decorative buckle, and blue jeans, stands in a corral. She is looking over her shoulder towards the right. The background shows a wooden fence and trees.

COME SHOP NEW STYLES AT THE CINCH  
BOOTH IN THE HALL OF EDUCATION

**CINCH®**

PROUD SPONSOR OF THE NATIONAL WESTERN STOCK SHOW





## NATIONAL WESTERN SCHOLARSHIP TRUST

- ◊ With a mission to operate solely for charitable and educational purposes, the National Western Scholarship Trust was formed as a 501(c)3 in 1983.
- ◊ Since its inception, the Trust has awarded over 2,500 scholarships and grown to over \$15,000,000 dollars.
- ◊ Every year proceeds from four major events are contributed to the Scholarship Trust. These events are the Coors Western Art Exhibit & Sale, the Citizen of the West dinner, the Auction of Junior Livestock Champions, and the Boots 'n Business luncheon. All four events occur during the annual January National Western Stock Show.
- ◊ The National Western scholarships are offered exclusively to students studying agriculture, rural medicine and veterinary science at the following Colorado and Wyoming schools:
  - Colorado State University** - Ag/Animal Science, Equine Science, Veterinary Medicine
  - University of Colorado, School of Medicine** - Rural Medicine
  - University of Wyoming** - Ag/Animal Science, Agribusiness
  - Aims Community College** - Ag/Animal Science, Rural Nursing
  - Casper College** - Ag/Animal Science
  - Colorado Northwestern Community College** - Rural Nursing
  - Laramie County Community College** - Ag/Animal Science
  - Lamar Community College** - Ag/Animal Science
  - Northeastern Junior College** - Ag/Animal Science
  - Rocky Vista University** - Rural Medicine
- ◊ The Scholarship Trust has grown to award over 100 scholarships annually, ranging from \$2,500 to \$15,000 per student. The total amount awarded each year is over \$575,000.
- ◊ To be eligible for National Western Scholarship Trust scholarships, students are required to have previously participated in the annual National Western Stock Show during January. Participation can include livestock or equestrian showing and/or judging, the NW internship program, the NW volunteer program, Westernaires, and sanctioned 4-H/FFA projects. Scholarship recipients must maintain a 3.0 cumulative GPA.

***\*\*Contact our partner schools directly to apply for a National Western Scholarship Trust scholarship***



## DENVER SCHOLARSHIP PROGRAM

- ◊ Applicants should exhibit a passion and desire to pursue undergraduate degrees and career paths that focus on making contributions to the emerging and influential fields of agriculture.
- ◊ Five, annual \$2,000 scholarships will be awarded.
- ◊ To be eligible for the Denver Scholarship Program scholarships, applicants must be graduating seniors from public high schools, college preparatory schools, charter, private or religious affiliated schools located in the City and County of Denver. Scholarships will be given to students attending any two or four-year public or private college or university, community college or technical school in Colorado, Wyoming, Kansas or Nebraska.

***\*\*Visit [nationalwestern.com/scholarships](http://nationalwestern.com/scholarships) to apply for a Denver Scholarship Program scholarship***

# KEEP YOUR HORSE *SAFE!*

Your horse's health and well-being are of the utmost importance and the National Western Stock Show is committed to animal health and safety year round. We employ several preventative measures as part of our biosecurity plan and encourage horse owners to join us in minimizing the risks to protect the health and welfare of the equine industry.

For the safety of you and your animals...

## DO

- ▶ Wash your hands with soap and water before AND after touching animals
- ▶ Park trailers and vehicles away from barns
- ▶ Use hand sanitizer often
- ▶ Keep animals up-to-date on all vaccinations
- ▶ Use receptacles to properly dispose of various wastes

## DO NOT

- ▶ Use common water or feed buckets, grooming tools or tack
- ▶ Have dogs at events
- ▶ Leave hoses on the ground or let hoses touch or drop into water buckets.

View the NW Complex Biosecurity Plan: [NationalWestern.com/Horse-Shows/Horse-Exhibitors](http://NationalWestern.com/Horse-Shows/Horse-Exhibitors)

NATIONAL  
WESTERN®  
*Stock Show*

NATIONAL WESTERN  
 *Complex*  
BIOSECURITY

SYNBIONT®  
Agricultural Wash

# ARRIVALS & DEPARTURES

To better assist our exhibitors, arrival times will be **scheduled**. Exhibitors will receive an email with a link to sign up for their preferred arrival window. If you need to arrive in Denver prior to your designated arrival time, you will need to make arrangements at another location. Exhibitors are asked to vacate immediately after their last class to ease move in of the next group.

DIVISION	ARRIVE NOT BEFORE	SHOW	VACATE BY
Mentor Matchup	Fri. 1/7 12:00 p.m.	Sat. 1/8	Sun. 1/9 5:00 p.m.
Ranch Rodeo	Fri. 1/7 12:00 p.m.	Sat. 1/8	Sun. 1/9 5:00 p.m.
Freestyle Reining	Fri. 1/7 12:00 p.m.	Sun. 1/9	Mon. 1/10 9:00 a.m.
AQHA/APHA	Sun. 1/9 5:00 p.m.	Mon. 1/10-Wed. 1/12	Wed. 1/12 3:00 p.m.
	<i>AQHA/APHA horses must be stalled in the Coliseum</i>		
Reined Cow	Sun. 1/9 5:00 p.m.	Tues. 1/11-Wed. 1/12	Wed. 1/12 4:00 p.m.
	<i>Events Center arenas will be closed to all horses on Monday 1/10, see schedule for details</i>		
Hunters	Wed. 1/12 3:00 p.m.	Thurs. 1/13-Mon. 1/17	Mon. 1/17 12:00 p.m.
Jumpers	Thurs. 1/13 6:00 a.m.	Thurs. 1/13-Mon. 1/17	Tues. 1/18 9:00 a.m.
Horseman's Challenge	Mon. 1/17 4:00 p.m.	Tues. 1/18-Wed. 1/19	Wed. 1/19 4:00 p.m.
Draft Horses	Wed. 1/19 10:00 a.m.	Thurs. 1/20-Sun. 1/23	Mon. 1/24 12:00 p.m.
Mules & Donkeys	Wed. 1/19 10:00 a.m.	Thurs. 1/20-Sun. 1/23	Mon. 1/24 12:00 p.m.
Pulling Horses	Thurs. 1/20 12:00 p.m.	Fri. 1/21-Sun. 1/23	Mon. 1/24 12:00 p.m.



## NATIONAL WESTERN® *Stock Show*

### FEED & BEDDING

For all your feed & bedding needs, please visit the National Western Feed Office - located southwest of the Events Center.

In an effort to reduce dust and maintain air quality, no outside bedding shall be permitted.

### Feed Office Hours

January 6-January 23  
7 a.m. to 7 p.m.

Exhibitors are encouraged to pre-order through the NWSS website. Valid emails submitted with entries will receive a link to the store. Payment is required at time of purchase.



## WHERE BEST IN SHOW MEETS BEST IN STAY.

*When it comes to the finest accommodations and best value anywhere,  
there's no better place to stay than with Marriott.*

*From spacious rooms and ultra-comfortable bedding, to first-class amenities  
and our world-famous Marriott service, you'll be treated like the Best in Show, and not  
just one of the herd.*

Visit [nationalwestern.com/official-stock-show-hotels](http://nationalwestern.com/official-stock-show-hotels) to  
receive the National Western Stock Show Rate at any one  
of our sponsor hotels in the Denver area:



- ♦ Aloft Denver Airport at Gateway Park
- ♦ Courtyard Denver Central Park
- ♦ Courtyard Denver Airport at Gateway Park
- ♦ Denver Marriott Westminster
- ♦ Residence Inn/Fairfield Inn Broomfield
- ♦ Residence Inn Denver Airport at Gateway Park
- ♦ Springhill Suites Denver Airport



# RULES & REGULATIONS

READ CAREFULLY BEFORE SUBMITTING ENTRIES. ALSO READ THE DIVISION SPECIFIC RULES.

**WARNING:** Under Colorado Law, an equine professional is not liable for an injury to or the death of a participant in equine activities resulting from the inherent risks of equine activities, pursuant to section 13-21-119, Colorado Revised Statutes.

Guided by its western heritage, the Western Stock Show Association engages, informs and leads the world in finding 21st century agricultural solutions to global challenges. Investing in future generations and guided by its western heritage, the Western Stock Show Association serves the world, promoting youth, adult and community development through livestock and equestrian education, innovation, entertainment and competition. The Western Stock Show Association values integrity, diversity, partnership, community, quality and stewardship.

**1. ALL EXHIBITORS:** All exhibitors in the Horse Show events and classes will be under the control and direction of the management of the National Western Stock Show, Rodeo & Horse Show (NWSS), but the NWSS, in no case, will be responsible for any loss, damage or injury to horses exhibited, or for any article of any kind or nature that may be lost, stolen, destroyed or in any way damaged. Each exhibitor or related individual or entity will be solely responsible for any loss, injury or damage done to, occasioned by, or arising from any horse or article owned or exhibited by that individual or related entity, and shall indemnify the NWSS against all legal action, claims, or demands of any kind or nature that may arise by virtue of the acts or omissions of an exhibitor or related individual or entity.

**A. CONDUCT:** Exhibitors and related entities are warned that any act of discourtesy or refusal to respond to the request(s) of NWSS officials will disqualify such individual and their horse or other animal from entry as a NWSS exhibitor. Under those circumstances, the exhibitor shall forfeit all fees and earnings and further disciplinary action may be taken at the discretion of Show Management and the NWSS Horse Executive Committee. Exhibitors may approach judges with ring steward and Show Management approval ONLY. Any fraternization and/or contact with judges will be prohibited until the exhibitor is finished showing to that judge. Professionalism and sportsmanship must be exhibited at all times. Any misconduct or unsportsmanlike conduct will not be tolerated. Exhibitor may be excused from the NWSS grounds and will be subject to further disciplinary measures as determined appropriate by Show Management and the NWSS Horse Executive Committee.

**B. INHUMANE TREATMENT:** No person on show grounds, including but not limited to, barns, stalls, parking area and show arena, may treat a horse or other animal in an inhumane manner, which includes, but is not limited to: using an object in the horse's mouth in a manner that might cause undue discomfort or distress; tying a horse or animal in a manner for a duration of time that might cause undue discomfort or distress; using electrical contrivance; or, letting blood from a horse or other animal. Manual poling WILL NOT be permitted at this show. See US Equestrian Federation Rule GR 844. NWSS will comply with and enforce the 1979 Horse Protection Act. Public Law 92-540. If inhumane treatment is identified by Show Management, their decision will be final. Show Management may bar violators from further participation in any event for the remainder of the show and exercise further disciplinary measures as determined appropriate by Show Management and the National Western Animal Health, Care and Use Committee.

**C. PROHIBITED BEHAVIOR:** NWSS reserves the right to question the alteration of any animal's physical or physiological wellbeing. As a condition of participation in the NWSS, participant agrees to submit to NWSS, at NWSS's discretion, any animal so entered for immediate testing. Test(s) may include, but not limited to blood, tissue and urine. Participant(s) further agrees that the conclusions reached by NWSS shall be final, and without recourse against NWSS. A participant of any animal(s) producing an analysis with a prohibited substance, sabotage, tampering, unethical fitting or inhumane practices may, at the discretion of Show Management and the National Western Animal Health, Care and Use Committee be barred from future competition at the NWSS.

**2. STATEMENT OF RESPONSIBILITY AND LIABILITY:** AT NO TIME WILL NWSS, ITS EMPLOYEES AND/OR AGENTS TAKE CARE, CUSTODY OR CONTROL OF ANY HORSES, LIVESTOCK AND/OR PERSONAL PROPERTY OF THE EXHIBITOR, OR ANY RELATED INDIVIDUAL OR ENTITY. AT ALL TIMES THE EXHIBITOR AND/OR OWNER, ITS EMPLOYEES, ASSOCIATES AND/OR AGENTS WILL HAVE FULL CONTROL, CUSTODY AND WILL CARE, FEED AND KEEP SAFE THEIR HORSES, LIVESTOCK AND PERSONAL PROPERTY, ALL IN ACCORDANCE WITH THE RULES AND REGULATIONS OF NWSS AND

## SHOW MANAGEMENT.

**3. NWSS MANAGEMENT RIGHTS:** Show Management reserves the right to adjust start times and/or rearrange classes if necessary to compensate for excessive entries or time shortages. Show Management reserves the right to limit entries in any class, change any course or pattern, cancel or combine any unfilled classes, or reschedule classes, after notice to exhibitors. Show Management reserves the right to make substitutions of judges or officials, if deemed necessary. Any questions or situations not covered in these Rules and Regulations shall be decided by Show Management and their decision will be final.

**4. INDEMNITY:** The exhibitor and/or owner agrees to be responsible for and pay, indemnify, and hold NWSS, its directors, officers, employees, agents and the City and County of Denver, harmless against any and all loss, claims, cost and/or expenses, including reasonable attorneys' fees, resulting from any loss or any claims or legal action of any nature whatsoever, whether or not reduced to a judgment, for any liability of any nature whatsoever that may arise against the NWSS as a result of the operation, and/or the use of the premises including any acts of the exhibitor and/or owner, any related individual or entity, their agents, employees, representatives, or invitees or in connection with any of the rights or privileges granted by NWSS to exhibitor and/or owner in this agreement and premium book, including any actions, without limitation, involving any violation of patent, trademark, franchise, copyright, libel or defamation liability claim including any claim based upon the intentional, unintentional or negligent acts of the exhibitor and/or owner, any related individual or entity, their agents, servants, employees or invitees. The exhibitor and/or owner further warrant that all copyrighted materials, to be performed or used during the term of this agreement, have been duly licensed or authorized by their copyright owners or agents and exhibitor and/or owner agrees to be responsible for all license and royalty fees incurred by reason of any performance or use of copyright materials and in addition to any provisions contained elsewhere in this agreement and premium book to indemnify and hold the NWSS harmless from any and all losses and expenses incurred with regard thereto. The exhibitor and/or owner will not be obligated to indemnify, defend or hold NWSS harmless from any claim or demand which arises solely out of the grossly negligent intentional act or failure to act by NWSS, its officers or employees.

**A. DAMAGES:** The exhibitor and/or owner will be responsible and pay for damages to the NWSS premises, facilities or equipment caused by, the exhibitor, owner, any related individual or entity, their employees, associates and or agents for all activities of the exhibitor and support personnel while on the premises of NWSS.

**5. FORCE MAJEURE AND GOVERNMENT REGULATION:** In view of the fact that NWSS is a non-profit corporation depending, to a great degree, upon the contributions and services of a substantial number of donors and volunteers, as well as the benefits provided by NWSS to the general public through education and related services as set forth in the Preamble to these General Rules and Regulations, NWSS deems it appropriate and prudent to be excused from liability, as set forth below in this paragraph, in the event of early cancellation of its events, operations and activities by reason of force majeure and/or governmental regulation. Accordingly, the following shall apply to the operations and activities conducted by NWSS:

NWSS shall not be liable for any delay or failure to perform its operations, activities, shows and events to the extent such delay or failure results from a force majeure occurrence. A force majeure occurrence is defined as any occurrence arising from causes beyond the reasonable control of NWSS which delays or prevents performance by NWSS otherwise required by this Agreement, including but not limited to any (i) breakage or accident to equipment, machinery or facilities; (ii) any strikes, lock-outs or other labor difficulties; (iii) statutes, ordinances, regulations, orders, or rules issued by governmental authorities; (iv) judicial decrees or orders; (v) acts of God; (vi) animal diseases and/or quarantines; (vii) wars, riots or insurrections; (viii) civil disobediences, public demonstrations or sabotage; (ix) fires, floods, explosions or inclement weather; (x) inability to obtain necessary labor, materials, supplies, utilities or transportation; (xi) depressions, recessions or other economic downturns; (xii) terrorist events; (xiii) embargoes or energy shortages; or (xiv) other causes beyond NWSS's reasonable control.

NWSS shall not be liable for any delay or failure to perform its operations, activities, shows and events to the extent such delay or failure results from NWSS's good faith compliance with applicable governmental statutes, ordinances, regulations, orders, rules or other directives, including but not limited to compliance with governmental directives concerning public health and safety, animal disease prevention detection and response, including animal quarantine and/or destruction; and protection of the environment.

**6. MOTORIZED VEHICLES AND NON-MOTORIZED TRANSPORTATION:** There shall be NO motorized vehicles, golf carts, roller blades, skateboards or scooters allowed on NWSS grounds without prior written approval and proof of liability insurance coverage. With the exception of unloading and loading, all vehicles must be parked in designated parking lots. Please read and be aware of USEF regulation: Per USEF GR901.29: Minors who do not have a valid driver's license which allows them to operate a motorized vehicle in the state in which they reside will not be permitted to operate a motorized vehicle of any kind, including, but not limited to, golf carts, motorcycles, scooters, or farm utility vehicles, on the competition grounds of licensed competitions. Minors who have a valid temporary license may operate the above described motorized vehicles as long as they are accompanied by an adult with a valid driver's license. The parent(s), legal guardian(s), or individual who signs the entry blank as a parent or guardian of a minor operating a motorized vehicle in violation of this rule are solely responsible for any damages, claims, losses or actions resulting from that operation. Violations of this rule will be cause for penalties against those responsible for the child committing the offense. Wheelchairs and other mobility assistance devices for individuals with disabilities are exempt from this rule. The unsafe use of personal electronic transport devices, as determined by the competition officials and management in their sole discretion, that do not require a driver's license to operate, including but not limited to segways, hover boards, and single wheeled scooters is prohibited on competition grounds. Operating such devices in areas where people gather may be deemed "unsafe use" if there is a risk of harm to others. If the operator of the device is a minor, the parent/legal guardian or individual who signs the entry blank as a parent or guardian of a minor operating the device in violation of this rule is accountable and may be subject to penalties. Wheelchairs and other mobility assistance devices for individuals with disabilities are exempt from this rule.

**7. DOGS AND PETS:** No animals, other than those being exhibited, are allowed on National Western Stock Show grounds with the exception of service animals as defined by the Americans with Disabilities Act. Service animals must be harnessed, leashed or tethered to the handler at all times, unless being attached interferes with tasks. If not attached, animal must remain close to the handler and be under verbal or signal control. Any service animal who displays unruly or aggressive behavior towards other guests, employees or animals may be denied entry or asked to leave the facility. For the safety and well-being of all involved, all other animals are prohibited. Further, it is recommended that owners/handlers confirm that service animals are up to date on all vaccines.

**8. DISABLED:** NWSS shall not knowingly exclude disabled exhibitors from showing who are in compliance with national association rules, NWSS Rules and Regulations and who have appropriate licenses and documentation.

**9. ENTRIES:** Every entry shall constitute an agreement that the person making it, owner, trainer, lessee, agent, manager, coach, rider, and the horse shall be subject to the constitution and rules and regulations of each sanctioning organization and the NWSS. Exhibitors are responsible for their own errors and those of their agents in preparation of entries. Entries should be submitted through proper entry programs and accompanied by fees and all necessary documents (youth cards, amateur cards, association membership cards, measurement cards and complete copies of registration papers showing current owner). If an entry is submitted missing any of the above items, it will be declined until it is submitted completely. If the entry is submitted to NWSS after the entry deadline, a late entry fee may be charged should the entry be accepted.

**A. ENTRY DEADLINES:** Entries for the 2022 Horse Show will all be submitted electronically through the website. See below for the opening and closing dates by division. Invitational and special event participants will be notified of deadlines. These deadlines will prevail unless otherwise stated or communicated. By submitting an entry, you acknowledge you have read, understood and agree to abide by the NWSS Rules & Regulations, division specific rules and any appropriate sanctioning organization's rules. **INCOMPLETE ENTRIES WILL NOT BE ACCEPTED.**

Division	Open	Close
Horseman's Challenge Draw	November 6	November 20
Draft Horse, Mule & Donkey	November 1	November 30
NRCHA	November 5	December 1
Horseman's Challenge	November 23	December 5
AQHA/APHA	November 10	December 10
USEF	November 15	December 15

**B. LATE OR POST ENTRIES:** Late or post entries will be accepted only with the Horse Show Manager's approval, and, if that event or show has not reached capacity, up until December

31, 2021. Any entry submitted after the entry closing deadline will be considered a late entry. The penalty shall be \$25.00 per horse/team entry. NO new entries will be accepted after December 31, 2021.

**C. POST CLASS ENTRIES:** Post class entries will be accepted for horses already entered in the show and other classes, are on the grounds and entering a class that has not yet reached the cap. Any classes added after the entry closing date will be considered a post class entry. Post class entries will be accepted up until 5:00 p.m. the day prior to the class. This will not apply to divisions that allow for championship classes. Entries for championship classes or final rounds must be processed in the Horse Show Office by the posted deadlines.

**D. FEES:** For entries to be accepted, a minimum of the Exhibitor Fee **MUST** accompany entries. Exhibitors submitting entries will be notified of the processing date for their division and they will have until then to mail a check to NWSS to replace their credit card. If a check is not received by that date, the credit card on file will be processed. Fees for each show are outlined on the specific division pages and entry forms. All Canadian and international exhibitors must pay all fees in United States funds. Any exhibitor issuing a check for payment of entries, stall or badges which does not clear their account for any reason will have five (5) days in which to make payment to keep entries eligible to participate in the NWSS, with a \$40.00 additional charge assessed. No refunds will be made on accounts of less than \$10.00.

**E. ENTRY CAP:** Show Management reserves the right to cap or limit entries in one (1) or more divisions, show or events. Entries with payment received by the entry closing date will be processed by timestamp with priority given to entries in ticketed performances to ensure high quality events. Show Management reserves the right to refuse, accept conditionally, and/or cancel any entries, also to disqualify exhibitors, prohibit exhibition of entries, and cancel awards or prizes, without claims for damage.

**F. SUBSTITUTIONS:** Substitutions must be made prior to or during show with the Horse Show Office. A fee of \$30.00 per horse will be charged for substitutions. All substitutions must be in writing (fax acceptable (303) 299-5526). No substitutions will be accepted by phone. Riders or handlers may be substituted at any time provided the change has been made in the Horse Show Office, prior to the start of the class and the rider/exhibitor meets all eligibility requirements for the class(es).

**G. VET OUT:** A vet out requires a vet certificate and notification from the exhibitor explaining the intent to vet out of the entire show. Vet outs received prior to December 31st will have all fees refunded. Vet outs received after December 31st and before the last day of their division's show will have all fees refunded except a \$30.00 processing fee per horse/back number. Once a horse or other animal is on NWSS Grounds, the vet certificate must come from the NWSS Official Show Veterinarian. All vet outs must be submitted in writing to the Horse Show Office by the last day of the division in which the horse or other animal is/was competing. Exhibitor badges and parking passes will not be available to owners, exhibitors or trainers if the entry is vetted out. Refunds for any other reason are at the sole discretion of Show Management. No refunds will be made on accounts of less than \$10.00.

**H. SHOW SCRATCH:** Exhibitors canceling entries without proper vet out requirements will forfeit all fees. Exhibitor badges and parking passes will not be available to owners, exhibitors, or trainers if the entry is scratched. Refunds may be requested of show management with a description of an extenuating circumstance outside of a vet out. These requests must be submitted in writing by the last day of the division in which the horse or other animal is/was competing.

**I. CLASS CHANGES:** Class changes originated by the owner, agent, or exhibitor will be subject to additional charges. All changes must be made in the Horse Show Office prior to the posted deadline for that division. Any exhibitor who does not compete in class(es) in which the exhibitor is officially entered, and does not scratch in the Horse Show Office prior to the posted deadline, will be billed for the class(es). Horses shown in a class without being officially entered will pay a penalty of \$25 per class in addition to the regular entry fee.

**J. COMPETITION NUMBERS:** All entry form data must be completely and accurately completed before each horse will be assigned a competition number. This number must be prominently displayed in accordance with breed association or federation rules whenever the horse is in the arena.

**K. ORDERS OF GO:** Orders of go will be computer drawn unless a physical draw is completed with at least two owners, trainers, agents or exhibitors present.



**L. RESULTS:** All results are subject to verification and review. All National Western Horse Show results are unofficial until Show Management and the sanctioning organization have reviewed and approved those results.

**M. STALLIONS:** Youth exhibitors will not be allowed to ride, drive or handle stallions in any class except as authorized in breed division rules. Youth must be a minimum of eight (8) years old at the time of showing to show in any event, division or class at NWSS unless sanctioning association rules permit younger. Exhibitors will be considered youth until they reach their 19th birthday or as stated by the sanctioning association.

**10. HORSE SHOW OFFICE:** The NWSS Horse Show Office in the Events Center will open January 8, 2022 one (1) hour before the first class or event and remain open until thirty (30) minutes after the last class of each day, unless otherwise posted. All Horse Show Office business must be conducted during these hours. Competition numbers may be picked up during regular Horse Show Office hours on days that division, show or event is on grounds. Initial check-in for each division will be scheduled in coordination with your arrival time on grounds with animals.

**11. ARENA & WARM UP SCHEDULES:** Arena schedules will be available on the website. The Events Center main arena is 150' x 300' at full spread, and the paddock arena is 85' x 185'. The footing in all arenas is a mix of sand and loam.

**12. RING PROCEDURES:** The show ring will be under absolute control of Show Management. Only qualified persons will be allowed in the ring during judging. Notice will be served upon all exhibitors as to the time classes will be called and all horses must be ready and waiting to enter the ring promptly. A two-minute gate rule will be enforced. When the gates are closed and the judge has started work, no exhibitor who is late will be admitted. Barn calls are made as a courtesy. It is the responsibility of the exhibitor to be aware of the progression of the show and be ready for their class when it enters the arena. There shall be no refunds for missed classes.

**13. ATTIRE:** It is the tradition of the show ring that an exhibitor be correctly attired for the class in question, that attendants be neatly dressed and horses properly presented. Show Management may, at its discretion, bar an entry or person from entering the ring if not suitably presented. There shall be no refunds for classes missed due to improper appearance.

**14. CLASSES:** Classes will be called according to the published schedule. All horses must be ready and waiting to promptly enter the arena. Horses will not be allowed to enter the arena after the gates are closed and the judge has started judging. Exhibitors are responsible for informing the Paddock Master of tack changes or delays that may cause the exhibitor to be late and possibly miss the class. The gate will be held or a break taken at Show Management's sole discretion. Gate holds will be for back-to-back classes only and prior approval from Show Management must be granted. Classes may be split or combined at the discretion of Show Management.

**15. PRIZE MONEY:** Prize money checks will be mailed to the exhibitors as soon as processing allows, within 30 days of the end of that division's show. Premiums will not be paid to any exhibitor who does not submit proper tax ID information. All premiums, whatsoever, not claimed within 90 days upon receipt, shall be deemed forfeited.

## **16. EXHIBITOR BADGES & PARKING PASSES:**

**A. EXHIBITOR BADGE:** The cost of an exhibitor badge is \$35.00 per badge, which includes general grounds admission for the entire length of the show, January 8-23, 2022. There is a limit of 10 badges per horse shown. One exhibitor badge is included with each Exhibitor Fee. Exhibitor badges may be preordered on your entry. Badges and parking permits may be picked up starting Friday, January 7, 2022 from 9 a.m. to 7 p.m. at the satellite trailer in the staging area. Exhibitor badges are not recognized for admittance to ticketed events.

**B. GUEST BADGE:** The cost of a guest badge is \$70.00 per badge, which includes general grounds admission for the entire length of the show, January 8-23, 2022. The guest badge does not carry any special privileges.

**C. PARKING PASSES:** No parking is allowed in the immediate vicinity of the barns except for a 30 minute loading/unloading limit. Parking is included with your exhibitor entry or ticket purchase. Lot H is reserved for horse exhibitors with a pass. Passes can be requested on the horse entry form and may only be issued to owners, trainers and exhibitors listed with a maximum of one per horse entry. Exhibitors may park in any NWSS designated lot (including the Coliseum parking lot) free of charge. Parking passes must be situated in the vehicle so as to be read from the exterior at all times. All vehicles not displaying a pass when

parked are subject to being ticketed and towed at owner's expense. Badges and parking passes may be picked up starting Friday, January 7, 2022 from 9 a.m. to 7 p.m. at the Satellite trailer in the Staging area.

**D. TRAILER PARKING:** Trailer parking is available at Coors Field. Entire show and daily rates are available. Trailers will not be allowed in Lot H unless otherwise stated. Trailers must be removed from the barn area immediately after loading/unloading. Trailer parking passes may be preordered on the horse entry form or purchased at the Coors Field lot. Badges and parking permits may be picked up starting Friday, January 7, 2022 from 9 a.m. to 7 p.m. at the satellite trailer in the staging area.

**E. FORFEITURE:** Any owner, trainer or exhibitor who has purchased exhibitor badges or parking passes and cancels for any reason will not be able to use those badges and passes if they do not have a horse entered in the show.

**17. HEALTH REQUIREMENTS:** All entries participating in the 2022 Horse Show must present a Horse Event Participation Declaration at time of arrival. This electronic form may be filled out within 24 hours of your arrival and submitted prior to collecting competition back numbers.

#### **A. OUT OF STATE ORIGIN**

1. Certificate of Veterinary Inspection (Health Certificate) is required and must be turned into the Animal Health Official for the NWSS at time of arrival and must be dated no more than 30 days from time of arrival. Health Certificate must indicate the horse's registered name. Horses entering grounds will be subject to examination by the Colorado State Veterinarian's office. Any animal found showing evidence of infectious, contagious, or communicable diseases may be immediately withdrawn from the show and held in quarantine at owner's risk and expense until properly treated and recovered, or until properly released in order to return to owner's premises.

2. A negative test for Equine Infectious Anemia (AGID or Elisa) is required and must be turned into Animal Health Official for the NWSS at time of arrival and must be dated no more than one (1) year from date of arrival.

#### **B. COLORADO ORIGIN**

1. Certificate of Veterinary Inspection (Health Certificate) is required and must be turned into the Animal Health Official for the NWSS at the time of arrival and must be dated no more than 30 days from time of arrival. The health Certificate must indicate the horse's registered name. Horses entering grounds will be subject to examination by the Colorado State Veterinarian's office. Any horse found showing evidence of infectious, contagious or communicable diseases may be immediately withdrawn from the show and held in quarantine at owner's risk and expense until properly treated and recovered, or until properly released in order to return to owner's premises.

2. Equine Infectious Anemia - No test required but is strongly recommended.

**C. Vesicular Stomatitis (VSV):** Annual notices on Vesicular Stomatitis will be issued prior to the event as requested by the Colorado State Veterinarian's Office. We appreciate all exhibitors' participation in state mandated policies.

**D. Equine Herpes Virus (EHV):** Exhibitors are strongly encouraged to temperature-test all horses on a regular and daily basis. In the event of a sudden temperature increase, exhibitors should notify the Horse Show Office immediately to arrange for a quarantine stall for observation. Annual notices on EHV will be issued prior to the event as requested by the Colorado State Veterinarian's Office. We appreciate all exhibitors' participation in state mandated policies.

For up to date information on horse disease in Colorado and the United States, please visit: Colorado Department of Agriculture: <https://www.colorado.gov/aganimals/fairs-exhibitions-and-shows>  
Equine Disease Communications Center: <http://www.equinediseasecc.org/>

### **18. BRAND REQUIREMENTS:**

#### **A. OUT OF STATE ORIGIN:**

1. All livestock coming from mandatory brand inspection states must have a current brand inspection certificate. The original copy of the inspection certificate must be presented with the health certificate at time of arrival. All livestock found to be

improperly shipped will be held until released by the state of origin.

2. All out of state exhibitors coming into Colorado for the NWSS from non-mandatory inspection states with livestock to be exhibited or sold must provide legal proof of ownership of the livestock by either:

- a) Legal bill of sale. The requirements of a legal bill of sale are:
  - \* Seller's name and address
  - \* Buyer's name and address
  - \* Complete description of livestock (including the number of head, color, sex, breed markings, registration numbers and brands)
  - \* Signature of seller
  - \* Signature of buyer
  - \* Name, address and signature of witness
- b) Registration Papers

## **B. COLORADO ORIGIN:**

1. All Colorado exhibitors must establish proof of ownership of livestock (cattle, calves, horses, mules, donkeys) by the following means:

- a) If the livestock is branded with a Colorado brand, you must have a brand card issued by the Brand Office identifying you as the brand owner.
- b) If the livestock is not branded and was purchased by you or given to you, you must either have i) the blue copy of a Colorado brand inspection certificate if the certificate is hand written, or ii) the bill of sale copy of a Colorado brand inspection certificate if the certificate was prepared digitally/electronically. The bill of sale copy of the digital certificate will have been crimped by the brand inspector and will have three Colorado state seals across the bottom of the certificate. Both documents - the blue copy of the handwritten inspection certificate and the bill of sale copy of the digital inspection certificate - must identify you as the purchaser/transferee of the livestock.
- c) If the livestock is home raised, you must have either (I) a brand card as noted above if the livestock is branded, or, (II) if the livestock is not branded, (a) registration papers identifying you as the owner, or (b) a notarized affidavit swearing upon penalty of perjury that the livestock was home raised by you.

**19. ARRIVAL PROCEDURE:** NWSS wants Exhibitors' arrival to be as smooth and enjoyable as possible. Horses must enter NWSS grounds via the Staging Area located off Brighton Blvd. Health papers must be submitted at this time. Trailers will be directed to the unloading area. Stall assignments will be available upon arrival. After unloading, trucks and trailers must promptly be moved to designated parking areas. Unloading/loading time is limited. All horse arrivals will be scheduled prior to show via electronic sign-up for desired time windows. Times will follow the Arrival & Departure Schedule on page 9. Exhibitors must check in at the Horse Show Office within an hour of their arrival. Exhibitors arriving without a trailer may park as directed in a vehicle lot and continue to the satellite trailer in the staging area to pick up any pre-ordered credentials or purchase additional. All entries participating in the 2022 Horse Show must present a Horse Event Participation Declaration at time of arrival. This electronic form may be filled out within 24 hours of your arrival and submitted prior to collecting competition back numbers.

## **20. STALLING**

**A. STALL RESERVATIONS:** One stall is included with each Exhibitor Fee. Every horse is required to stall – no haul-ins will be permitted. Stalls will be assigned by the Stalling Superintendent. Horses must be placed in the assigned stalls and no change will be permitted without consent of the Stalling Superintendent. Horses not entered in the show will not receive a stall and will not be permitted to enter grounds.

**B. REQUESTS:** Requests for adjacent stalls from different owners should be requested on each owner's entry form. Stall assignments will be available upon arrival. Horses or other animals placed in stalls not assigned to them will be required to be moved by the owner or related entity. Stalls will not be assigned until all required fees have been paid. Exhibitors are not allowed to move other owner's horses or other animals from stalls. If horses are not out of stalls at assigned times, a penalty of \$500.00 will be assessed per animal per day.

**C. TACK STALLS:** Additional stalls must be ordered on your horse entry form. Due to limited availability, exhibitors may request extra horse or tack stalls on their entry and Show Management will approve and grant as appropriate.

**D. MULTI DAY STAY:** If a horse or other animal is entered in more than one (1) breed/division, a stall fee for each division must be paid and arrangements made with the Stalling

Superintendent to remain in the same stalls or relocate. Stalling is not permitted for horses or other animals not entered in competition. Owners will have to find stalling off grounds for horses or other animals not entered and showing.

**E. CARE:** All horses or other animals will be under the supervision and care of their owners. Horse or other animal exhibitors are required to keep their stall and the aisles clear and neat. Stall emergency contact cards are available in the Horse Show Office and Stalling Office for posting on stalls. Locks on stalls are not allowed, except for tack stalls.

**F. STALLS:** The stalls are 8' x 10' on dirt floor in the Events Center and 10' x 10' on concrete floor in the Expo Hall. All stall doors are provided. Any panels not returned to their original position prior to that division's vacancy time will be charged \$20.00 per panel. This fee will be charged to the exhibitor, if identifiable, or to the barn or trainer's account.

**G. BARN CLEAN-UP:** All exhibitors will be required to dump manure in NWSS designated areas to help with quick removal. It is also requested by NWSS staff that all alley ways be watered to help keep down the dust in the barns. If rules are not strictly adhered to, Show Management has the right to request any exhibitor to vacate the show grounds.

**H. NO NAILS:** No nails are allowed to be used in stall walls.

**I. STALLING OFFICE:** The Events Center Stalling Office is located between the Events Center Paddock arena and the Events Center Barn area. It will remain open 24 hours a day beginning Friday, January 7, 2022 at 12:00 p.m.

**J. DECORATIONS:** Stall decorations must not block any aiseways and must be fire retardant. Blocking or partial blocking of aisles is prohibited. Any material covering the top of stalls is prohibited, with the exception of tack stalls. Sufficient space must be left in the aisles to allow for two-way horse traffic. Violations will result in a \$50.00 fine per incident. This fee will be charged to the exhibitor, if identifiable, or to the barn or trainer's account.

**K. ACCESS:** NWSS will provide Fire Code approved stanchions for stall row fronts that are not a public access point to encourage safety of guests, exhibitors and horses. These may be utilized at the exhibitors' discretion. A \$50.00 fine will be charged for any damaged or missing stanchions.

**21. FEED AND BEDDING:** Feed and bedding will be available for purchase through the website and on-grounds Feed Office. Exhibitors may bring their own hay and grain, if desired. For safety, exhibitors are required to store no more than two days supply of hay in the barns at one time. Bedding can be wood chips or shavings only and must be purchased through the Feed Office. Straw is not allowed in the barns/stalls, with the exception of Draft Horses stalled from Wednesday, January 19, 2022 through Sunday, January 23, 2022. Exhibitors are required to pay at time of ordering. No open accounts will be allowed. The Feed Office will be open January 6-January 23 from 7 a.m. to 7 p.m.

**22. WASTE:** A disposal system is in place for manure and trash. Please bring your manure to the designated locations near the barns for easy removal. Manure dump areas are for manure only and dumpsters/trash cans are for trash only. Medical waste containers are located in the barn areas. Your cooperation is appreciated to keep our barn areas clean and safe.

**23. RELEASE INFORMATION:** All exhibitors must obtain a release form before removing any livestock from NWSS Grounds. All releases must be obtained from the Stalling Office. You must have a driver's license number, vehicle color and make, license plate number and state, trailer color, trailer license plate number and state. Releases are only good for 30 minutes. Prior to requesting a release, your trailer should be packed, horses ready to load, you should obtain a "Paid Feed Bill" from Feed Office and a "Paid Office Bill" from the Horse Show Office to present to the Stalling Superintendent for a release, and if necessary a brand release. Upon release, horses or other animals will not be allowed back on the grounds unless they are returning for a different show with different stall requirements. No "in and out" passes will be issued.

**24. EXHIBITOR SEATING:** Exhibitor seating is reserved during ticketed events only for those competitors who have horses participating in that ticketed performance. Exhibitor tickets are available only from the Horse Show Office and are on a first come, first served basis. Tickets will be limited to horses/teams competing in each performance. Exhibitors wishing to purchase event tickets may reference the NWSS ticket offer in this book.



## 25. SIGNAGE

**A. BREED ASSOCIATION SHOWS AND SALES** are held within the confines of the NWSS grounds. NWSS, therefore, reserves all rights to any advertising, signage, announcements, etc., made on behalf of sponsors and supporters of the show. Accordingly, NWSS will not permit any sponsor advertising, signage, announcements, etc., other than those rights contracted directly with the NWSS. Breed Associations, members and exhibitors are, therefore, prohibited from providing exposure during their respective events held here at the NWSS for sponsors they have obtained without written permission from the NWSS. Shirt insignia and embroidered stall curtain insignia are excepted from this rule.

**B. SIGNS** on stalls or competition attire cannot advertise commercial ventures or products. Stall signs must advertise farms, ranches, and stable only. Stable name signs with incorporated commercial products must have prior approval from the Horse Show Manager. Show Management reserves the right to remove signs in violation with the above rule.

**C. THE NATIONAL WESTERN STOCK SHOW**, both name and mark, are a registered trademark. You may not use without prior written consent from the director or marketing and PR change the name "National Western Stock Show" or any graphic symbol used by or associated with National Western Stock Show. This includes all iterations of the logo and "NW" icon. Unauthorized use can result in legal action. The development of logos/identity marks for special programs or events that incorporate the National Western Stock Show name or brand must be submitted and approved in writing by the director of marketing and PR.

**26. FOOD & ALCOHOL:** In accordance with the Colorado State Liquor Code and City of Denver Law, the National Western Stock Show prohibits the disbursement, sales, or bringing of any non-permitted food or alcohol on grounds by a third party. Food and alcoholic beverages can be obtained from our in-house concessionaire, SSA Group, located at various locations throughout the show grounds.

**27. MARKETING & MEDIA POLICIES:** The commercial use and/or sale of photographs, video and film taken at NWSS is strictly prohibited without written consent of the NWSS Media Department. Visit the website for current policies, brand guidelines and media credential requests.

**28. BABY STROLLERS:** Baby strollers will not be allowed in the stable areas and are strongly discouraged in other horse and livestock stalling areas. Please place all strollers in the appropriate areas.

**29. PROTEST:** Any exhibitor lodging a protest with the NWSS must first deposit \$200.00 cash or certified check with Show Management, with sum to be forfeited if the protest is not sustained. A protest must be signed by the protester and must be filed in writing within 12 hours of the occurrence of the alleged violation. Protests will be handled in accordance with the appropriate breed association or federation rules and regulations. Any federation or association guidelines on filing protests supersede NWSS guidelines.

**30. SALES:** All sales being conducted by a breed association must be in accordance with state laws, and/or breed regulations. Each consignor must be a member of the association sponsoring the sale. All checks for purchase of stock must be payable to the association sponsoring the sale, NOT A SALE COMPANY. All animals must be inspected and ownership proven prior to sale, by a Colorado Brand Inspector. Each association must comply with Colorado Law concerning issuance of proper bills of sale, purchaser's invoices and consignment records. Sale catalogs must show lot number, complete description of each lot and owner's name. Private Treaty sales are encouraged.

**31. DISPUTE RESOLUTION:** Any dispute involving these Rules and Regulations shall be resolved by the NWSS Management and the Horse Executive Committee.

**32. DIRECTIONS:** The National Western Complex is located near the intersection of Interstate 25 and Interstate 70 northeast of downtown Denver. All animals will be directed to enter Gate 7 which is north on Brighton Blvd. from the I-70 exit.

**33. EMERGENCY CARE:** Centura Health - St. Anthony Hospital provides a full range of medical specialties and is one of three Level I Trauma Centers in Colorado. They are located at 11600 W. 2nd Place Lakewood, CO 80228.

# CODE OF SHOW RING ETHICS

FROM THE INTERNATIONAL ASSOCIATION OF FAIRS AND EXPOSITIONS. All exhibitors will be expected to adhere to these guidelines in addition to the NWSS Rules & Regulations and specific division rules.



Exhibitors of animals at livestock shows shall at all times deport themselves with honesty and good sportsmanship. Their conduct in this competitive environment shall always reflect the highest standards of honor and dignity to promote the advancement of agricultural education. This code applies to junior as well as open class exhibitors who compete in structured classes of competition. This code applies to all livestock offered in any event at a livestock show. In addition to the "IAFE Code of Show Ring Ethics," fairs and livestock shows may have rules and regulations which they impose on the local, county, state, provincial and national levels.

All youth leaders working with junior exhibitors are under an affirmative responsibility to do more than avoid improper conduct or questionable acts. Their moral values must be so certain and positive that those younger and more pliable will be influenced by their fine example. Owners, exhibitors, fitters, trainers and absolutely responsible persons who violate the code of ethics will forfeit premiums, awards and auction proceeds and shall be prohibited from future exhibition in accordance with the rules adopted by the respective fairs and livestock shows. Exhibitors who violate this code of ethics demean the integrity of all livestock exhibitors and should be prohibited from competition at all livestock shows in the United States and Canada.

The following is a list of guidelines for all exhibitors and all livestock in competitive events:

- 1) All exhibitors must present, upon request of fair and livestock show officials, proof of ownership, length of ownership, and age of all animals entered. Misrepresentation of ownership, age, or any facts relating thereto is prohibited.
- 2) Owners, exhibitors, fitters, trainers, or absolutely responsible persons shall provide animal health certificates from licensed veterinarians upon request by fair or livestock show officials.
- 3) Junior exhibitors are expected to care for and groom their animals while at fairs or livestock shows.
- 4) Animals shall be presented to show events where they will enter the food chain free of violative drug residues. The act of entering an animal in a livestock show is the giving of, consent by the owner, exhibitor, fitter, trainer and/or absolutely responsible person for show management to obtain any specimens of urine, saliva, blood, or other substances from the animal to be used in testing. Animals not entered in an event which culminates with the animal entering the food chain shall not be administered drugs other than in accordance with applicable federal, state and provincial statutes, regulations and rules. Livestock shall not be exhibited if the drugs administered in accordance with federal, state and provincial statutes, regulations and rules affect the animal's performance or appearance at the event. If the laboratory report on the analysis of saliva, urine, blood, or other sample taken from livestock indicates the presence of forbidden drugs or medication, this shall be prima facie evidence such substance has been administered to the animal either internally or externally. It is presumed that the sample of urine, saliva, blood, or other substance tested by the laboratory, to which it is sent, is the one taken from the animal in question, its integrity is preserved and all procedures of said collection and preservation, transfer to the laboratory and analysis of the sample are correct and accurate and the report received from the laboratory pertains to the sample taken from the animal in question and correctly reflects

the condition of the animal at the time the sample was taken, with the burden on the owner, exhibitor, fitter, trainer, or absolutely responsible person to prove otherwise. At any time after an animal arrives on the fair or livestock show premises, all treatments involving the use of drugs and/or medications for the sole purpose of protecting the health of the animal shall be administered by a licensed veterinarian.

5) Any surgical procedure or injection of any foreign substance or drug or the external application of any substance (irritant, counterirritant, or similar substance) which could affect the animal's performance or alter its natural contour, confirmation, or appearance, except external applications of substances to the hoofs or horns of animals which affect appearance only and except for surgical procedures performed by a duly licensed veterinarian for the sole purpose of protecting the health of the animal, is prohibited.

6) The use of showing and/or handling practices or devices such as striking animals to cause swelling, using electrical contrivance, or other similar practices are not acceptable and are prohibited.

7) Direct criticism or interference with the judge, fair or livestock show management, other exhibitors, breed representatives, or show officials before, during, or after the competitive event is prohibited. In the furtherance of their official duty, all judges, fair and livestock show management, or other show officials shall be treated with courtesy, cooperation and respect and no person shall direct abusive or threatening conduct toward them.

8) No owner, exhibitor, fitter, trainer, or absolutely responsible person shall conspire with another person or persons to intentionally violate this code of ethics or knowingly contribute or cooperate with another person or persons either by affirmative action or inaction to violate this code of ethics. Violation of this rule shall subject such individual to disciplinary action.

9) The application of this code of ethics provides for absolute responsibility for an animal's condition by an owner, exhibitor, fitter, trainer, or participant whether or not he or she was actually instrumental in or had actual knowledge of the treatment of the animal in contravention of this code of ethics.

10) The act of entering an animal is the giving of consent by the owner, exhibitor, fitter, trainer, or absolutely responsible person to have disciplinary action taken by the fair or livestock show for violation of this Code of Show Ring Ethics and any other rules of competition of the fair or livestock show without recourse against the fair or livestock show. The act of entering an animal is the giving of consent that any proceedings or disciplinary action taken by the fair or livestock show may be published with the name of the violator or violators in any publication of the International Association of Fairs and Expositions, including Fairs and Expos and any special notices to members.

11) The act of entering of an animal in a fair or livestock show is the giving of verification by the owner, exhibitor, fitter, trainer, or absolutely responsible person that he or she has read the IAFE Code of Show Ring Ethics and understands the consequences of and penalties provided for actions prohibited by the code. It is further a consent that any action which contravenes these rules and is also in violation of federal, state, or provincial statutes, regulations, or rules may be released to appropriate law enforcement authorities with jurisdiction over such infractions.

By submitting an entry for the National Western Stock Show Horse Show, you agree and consent to abide by the Rules and Regulations in this Horse Premium List, including the IAFE National Code of Show Ring Ethics as stated above.

For more information, visit: [www.fairsandexpos.com](http://www.fairsandexpos.com)



## CONSTRUCTION UPDATE



The City and County of Denver is responsible for constructing several buildings and the necessary infrastructure for the initial phases of the National Western Center redevelopment, to enable campus partners to program and operate the campus. Construction of the campus continues, including preparations for the 2022 Stock Show. Over the next several months, the City and County of Denver, the National Western Center Authority, Colorado State University and the Western Stock Show Association will be planning to welcome you to the Best 16 Days in January!

## WHAT TO EXPECT AT STOCK SHOW 2022

### HW HUTCHISON FAMILY STOCKYARDS EVENT CENTER

This 46,000-square-foot facility will debut at the 2022 Stock Show! With views of the Rocky Mountains and downtown Denver, this new center will not only consolidate several facilities from years prior but will also provide year-round uses and support for the Yards. The Armour water tower is in its new location and brick pavers from the historic yards now adorn the walkway as you head to the Herd Sire Plaza.

- Auction arena
- Show arena
- International room
- Beer garden
- ADA access to grounds and facility

### CILLE & RON WILLIAMS STOCKYARDS

The Yards are 20 acres of paved flexible outdoor space for cattle, or events like concerts, farmers markets and more. This year, Stock Show visitors and exhibitors will experience the new campus configuration.

- Flexible pens
- Dedicated loading and unloading areas
- Exercise areas
- Permanent power
- Wash bays with pressured and tempered water
- Permanent bison pens
- Marion underpass open to people & animal traffic
- Cattle tie-outs

### CONSTRUCTION YOU WILL SEE IN 2022

Construction continues on the new campus and we are excited to share the progress with visitors and exhibitors from near and far.

- Riverfront open space – with the old railroad tracks removed, site work will be underway
- 51st Avenue Bridge – construction to connect Washington St. to National Western Drive
- National Western Drive – significant portions of the new street alignment will be complete and open
- Construction underway on the campus energy system that uses sewer heat recovery technology
- Interim conditions and temporary uses for the Main Plaza, Equestrian Center and Livestock Center areas

### IMPROVEMENTS YOU WILL SEE IN 2022

The National Western Center represents a transformation of the National Western Complex into a sustainable, year-round destination.

- Brighton Boulevard from 48th Avenue to Race Court is open to vehicles, pedestrians and cyclists to enjoy
- The new RTD N line at the National Western Center Station is open and is your first stop from Denver Union Station
- The consolidation and relocation of almost three miles of railroad tracks away from the river is complete
- The renovation of the maintenance & operations facility is complete and in use for fleet maintenance, offices, and storage

TO LEARN MORE VISIT  
[NATIONALWESTERNCENTER.COM](http://NATIONALWESTERNCENTER.COM)

# TENTATIVE HORSE SHOW SCHEDULE

(T) denotes ticketed event. Exhibitor badges not recognized for admittance.

**Friday, January 7, 2022 8 AM**  
**Denver Coliseum**  
**Western National Roundup 4-H Youth Horse Judging Contest**

**Friday, January 7, 2022 10 AM**  
**CINCH Arena in the Events Center**  
**Boots 'n Business Luncheon** (by invitation)

**Saturday, January 8, 2022 9 AM**  
**CINCH Arena in the Events Center**  
**Youth Ranch Horse Mentor Matchup**

**Saturday, January 8, 2022 5:30 PM (T)**  
**CINCH Arena in the Events Center**  
**Invitational Ranch Rodeo** presented by Colorado Barricade

**Sunday, January 9, 2022 9 AM**  
**CINCH Arena in the Events Center**  
**National Western Cowboy Church** presented by CowboyChurch.TV from RFD-TV

**Sunday, January 9, 2022 2 PM (T)**  
**CINCH Arena in the Events Center**  
**\$25,000 RAM Invitational Freestyle Reining & Youth Freestyle Reining Showcase** (prior)

**Monday, January 10, 2022**  
**CINCH Arena in the Events Center & Paddock**  
**Citizen of the West Scholarship Dinner** (by invitation) - both arenas closed all day

**Monday, January 10, 2022 7:30 AM**  
**Denver Coliseum**  
**Quarter Horse & Paint Horse Show**  
 01. AQHA Tie-Down Roping All Ages  
 02. AQHA Heading All Ages  
 03. AQHA Heeling All Ages  
 04. AQHA Heading All Ages  
 05. AQHA Heeling All Ages  
 06. AQHA Tie-Down Roping All Ages  
 07. AQHA Heading Amateur  
 08. AQHA Heading Youth  
 09. AQHA Heeling Amateur  
 10. AQHA Heeling Youth  
 11. AQHA Tie-Down Roping Amateur  
 12. AQHA Tie-Down Roping Youth  
 13. AQHA Breakaway Roping Amateur  
 14. AQHA Breakaway Roping Youth  
 Awards Presentation

**Tuesday, January 11, 2022 7:30 AM**  
**Denver Coliseum**  
**Quarter Horse & Paint Horse Show**  
 15. APHA Heading Junior Horse  
 16. APHA Heading Senior Horse  
 17. APHA Heeling Junior Horse  
 18. APHA Heeling Senior Horse  
 19. APHA Heading Amateur  
 20. APHA Heading Youth 18 & Under  
 21. APHA Heading Youth 13 & Under

22. APHA Solid Paint Bred Heading  
 23. APHA Heeling Amateur  
 24. APHA Heeling Youth 18 & Under  
 25. APHA Heeling Youth 13 & Under  
 26. APHA Solid Paint Bred Heeling  
 27. APHA Steer Stopping Junior Horse  
 28. APHA Steer Stopping Senior Horse  
 29. APHA Steer Stopping Amateur  
 30. APHA Steer Stopping Youth 18 & Under  
 31. APHA Steer Stopping Youth 13 & Under  
 32. APHA Solid Paint Bred Steer Stopping  
 33. APHA Breakaway Roping Amateur  
 34. APHA Breakaway Roping Youth 18 & Under  
 35. APHA Breakaway Roping Youth 13 & Under  
 36. APHA SPB Breakaway Roping Amateur  
 37. APHA Tie-Down Roping Junior Horse  
 38. APHA Tie-Down Roping Senior Horse  
 39. APHA Tie-Down Roping Amateur  
 40. APHA Tie-Down Roping Youth 18 & Under  
 41. APHA Tie-Down Roping Youth 13 & Under  
 42. APHA Solid Paint Bred Tie-Down Roping  
 43. APHA Tie-Down Roping Junior Horse  
 44. APHA Tie-Down Roping Senior Horse  
 45. APHA Tie-Down Roping Amateur  
 46. APHA Tie-Down Roping Youth 18 & Under  
 47. APHA Tie-Down Roping Youth 13 & Under  
 48. APHA Solid Paint Bred Tie-Down Roping  
 49. APHA Breakaway Roping Amateur  
 50. APHA Breakaway Roping Youth 18 & Under  
 51. APHA Breakaway Roping Youth 13 & Under  
 52. APHA SPB Breakaway Roping Amtr  
 53. APHA Steer Stopping Junior Horse  
 54. APHA Steer Stopping Senior Horse  
 55. APHA Steer Stopping Amateur  
 56. APHA Steer Stopping Youth 18 & Under  
 57. APHA Steer Stopping Youth 13 & Under  
 58. APHA Solid Paint Bred Steer Stopping  
 59. APHA Heading Junior Horse  
 60. APHA Heading Senior Horse  
 61. APHA Heeling Junior Horse  
 62. APHA Heeling Senior Horse  
 63. APHA Heading Amateur  
 64. APHA Heading Youth 18 & Under  
 65. APHA Heading Youth 13 & Under  
 66. APHA Solid Paint Bred Heading  
 67. APHA Heeling Amateur  
 68. APHA Heeling Youth 18 & Under  
 69. APHA Heeling Youth 13 & Under  
 70. APHA Solid Paint Bred Heeling  
 71. AQHA Tie-Down Roping Amateur  
 72. AQHA Tie-Down Roping Youth  
 73. AQHA Breakaway Roping Amateur  
 74. AQHA Breakaway Roping Youth  
 75. AQHA Heading Amateur  
 76. AQHA Heading Youth  
 77. AQHA Heading Amateur  
 78. AQHA Heeling Youth  
 Awards Presentation

**Tuesday, January 11, 2022 8 AM**  
**CINCH Arena in the Events Center**  
**Reined Cow Horse Show**  
 145. Open Derby (Herd Work)  
 146. Limited Open Derby (Herd Work)



- 147. Novice Horse Derby (Herd Work)
- 148. Non Pro Derby (Herd Work)
- 149. Non Pro Limited Derby (Herd Work)

**Tuesday, January 11, 2022 not before 6 PM**

**CINCH Arena in the Events Center**

**Reined Cow Horse Show Bridle Feature**

- 150. Open Bridle (Rein & Fence Work)
- 151. Non Pro Bridle (Rein & Fence Work)

**Wednesday, January 12, 2022 7:30 AM**

**Denver Coliseum**

**Quarter Horse & Paint Horse Show**

- 79. APHA Barrel Racing All Ages
- 80. APHA Barrel Racing Amateur
- 81. APHA Barrel Racing Youth 18 & Under
- 82. APHA Barrel Racing Youth 13 & Under
- 83. APHA Solid Paint Bred Barrel Racing
- 84. AQHA Barrel Racing All Ages
- 85. AQHA Barrel Racing Amateur
- 86. AQHA Barrel Racing Youth  
Awards Presentation
- 87. APHA Performance Halter Stallions
- 88. APHA Yearling Stallions
- 89. APHA Two Year Old Stallions
- 90. APHA Three Year Old Stallions
- 91. APHA Four Years & Older Stallions  
Grand & Reserve Champion Stallion
- 92. APHA Solid Paint Bred Performance Stallions
- 93. APHA Solid Paint Bred 2 & Under Stallions
- 94. APHA Solid Paint Bred 3 & Older Stallions  
Grand & Res Champ Solid Paint Bred Stallion
- 95. APHA Performance Mares
- 96. APHA Yearling Mares
- 97. APHA Two Year Old Mares
- 98. APHA Three Year Old Mares
- 99. APHA Four Years+ Mares  
Grand & Reserve Champion Mare
- 100. APHA Solid Paint Bred Perf Mares
- 101. APHA Solid Paint Bred 2 & Under Mares
- 102. APHA Solid Paint Bred 3 & Older Mares  
Grand & Res Champ Solid Paint Bred Mare
- 103. APHA Performance Geldings
- 104. APHA Yearling Geldings
- 105. APHA Two Year Old Geldings
- 106. APHA Three Year Geldings
- 107. APHA Four Years+ Geldings  
Grand & Reserve Champion Gelding
- 108. APHA SPB Performance Geldings
- 109. APHA Solid Paint Bred 2 & Under Geldings
- 110. APHA Solid Paint Bred 3 & Older Geldings  
Grand & Res Champion SPB Gelding
- 111. AQHA Performance Stallions
- 112. AQHA Yearling Stallions
- 113. AQHA Two Year Old Stallions
- 114. AQHA Three Year Old Stallions
- 115. AQHA Aged Stallions  
Grand & Reserve Champion Stallion
- 116. AQHA Performance Mares
- 117. AQHA Yearling Mares
- 118. AQHA Two Year Old Mares
- 119. AQHA Three Year Old Mares
- 120. AQHA Aged Mares  
Grand & Reserve Champion Mare
- 121. AQHA Performance Geldings
- 122. AQHA Yearling Geldings
- 123. AQHA Two Year Old Geldings
- 124. AQHA Three Year Old Geldings
- 125. AQHA Aged Geldings  
Grand & Reserve Champion Gelding

- Break
- 126. APHA Barrel Racing Final
- 127. AQHA Barrel Racing Final  
Pot. Amateur/Youth Barrel Racing Final  
Awards Presentation
- 128. APHA Tie-Down Roping Final
- 129. AQHA Tie-Down Roping Final  
Pot. Amateur/Youth Tie-Down Roping Final
- 130. APHA vs. AQHA Tie-Down Roping Final
- 131. APHA Breakaway Roping Final
- 132. AQHA Breakaway Roping Final
- 133. APHA vs. AQHA Breakaway Roping Final
- 134. APHA Team Roping Final
- 135. AQHA Team Roping Final  
Pot. Amateur/Youth Team Roping Final
- 136. APHA vs. AQHA Team Roping Final  
Awards Presentation
- 137. AQHA Ranch Riding All Ages
- 138. AQHA Ranch Riding Amateur
- 139. AQHA Ranch Riding Youth
- 140. APHA Ranch Riding All Ages
- 141. APHA Ranch Riding Amateur
- 142. APHA Ranch Riding Youth 18 & Under
- 143. APHA Ranch Riding Youth 13 & Under
- 144. APHA Solid Paint Bred Ranch Riding  
Awards & High Point Presentation

**Wednesday, January 12, 2022 8 AM**

**CINCH Arena in the Events Center**

**Reined Cow Horse Show**

- 145. Open Derby (Rein & Fence Work)
- 146. Limited Open Derby (Rein & Fence)
- 147. Novice Horse Derby (Rein & Fence)
- 152. Non Pro Limited (Rein & Box Work)
- 153. Open Hackamore (Rein & Fence)
- 148. Non Pro Derby (Rein & Fence Work)
- 154. Non Pro Hackamore (Rein & Fence)
- 149. Non Pro Limited Derby (Rein & Box Work)

**Thursday, January 13, 2022 8 AM**

**CINCH Arena in the Events Center**

**Hunter/Jumper Show**

- 155. Low Hunter
- 156. Performance Hunter 3'3"
- 157. Performance Handy Hunter 3'3"
- 158. Performance Hunter U/S 3'3"
- 159. Performance Hunter 3'6"
- 160. Performance Handy Hunter 3'6"
- 161. Performance Hunter U/S 3'6"
- 162. Green Hunter 3'6"
- 163. Green Handy Hunter 3'6"
- 164. Green Hunter Under Saddle 3'6"
- 165. Green Hunter 3'9"
- 166. Green Handy Hunter 3'9"
- 167. Green Hunter Under Saddle 3'9"
- 168. High Performance Hunter
- 169. High Performance Handy Hunter
- 170. High Performance Hunter U/S
- 171. Adult Amateur Hunter 18-35
- 172. Adult Amateur Hunter U/S 18-35
- 173. Adult Amateur Hunter 36-49
- 174. Adult Amateur Hunter U/S 36-49
- 175. Adult Amateur Hunter 50 & Over
- 176. Adult Amateur Hunter U/S 50 & Over  
Break - Hacking - Jumpers Only

**Thursday, January 13, 2022 not before 11 AM**

**CINCH Arena in the Events Center**

**Hunter/Jumper Show**

- 177. Low Jumper

178. Modified Jumper

**Friday, January 14, 2022**  
**CINCH Arena in the Events Center**  
**Hunter/Jumper Show**

**7 AM**

- 179. Low Hunter
- 180. Performance Hunter 3'3"
- 181. Performance Hunter Stake 3'3"
- 182. Performance Hunter 3'6"
- 183. Performance Hunter Stake 3'6"
- 184. Green Hunter 3'6"
- 185. Green Hunter Stake 3'6"
- 186. Green Hunter 3'9"
- 187. Green Hunter Stake 3'9"
- 188. High Performance Hunter
- 189. High Performance Hunter Stake
- 190. Adult Amateur Hunter 18-35
- 191. Adult Amateur Hunter Stake 18-35
- 192. Adult Amateur Hunter 36-49
- 193. Adult Amateur Hunter Stake 36-49
- 194. Adult Amateur Hunter 50 & Over
- 195. Adult Amateur Hunter Stake 50+  
Break
- 196. Low Jumper
- 197. Modified Jumper
- 198. Junior/Amateur-Owner Jumper

**Friday, January 14, 2022**  
**CINCH Arena in the Events Center**  
**Hunter/Jumper Show**

**7:30 PM (T)**

- 199. \$15,000 Monarch Casino Gambler's Choice Stake

**Saturday, January 15, 2022**  
**CINCH Arena in the Events Center**  
**Hunter/Jumper Show**

**7 AM**

- 200. Amateur Owner Hunter 18-35
- 201. Amateur Owner Handy Hunter 18-35
- 202. Amateur Owner Hunter U/S 18-35
- 203. Amateur Owner Hunter 36 & Over
- 204. Amateur Owner Handy Hunter 36+
- 205. Amateur Owner Hunter U/S 36+
- 206. ASPCA Horsemanship
- 207. Small Junior Hunter
- 208. Small Junior Handy Hunter
- 209. Small Junior Hunter Under Saddle
- 210. Large Junior Hunter
- 211. Large Junior Handy Hunter
- 212. Large Junior Hunter Under Saddle  
Break
- 213. Modified Jumper Stake
- 214. Low Adult Amateur Jumper
- 215. Low Children's Jumper
- 216. High Adult Amateur Jumper
- 217. High Children's Jumper
- 218. Junior/Amateur-Owner Jumper

**Saturday, January 15, 2022**  
**CINCH Arena in the Events Center**  
**Wild West Show**

**5 PM (T)**

**Saturday, January 15, 2022**  
**CINCH Arena in the Events Center**  
**Hunter/Jumper Show**

**7:30 PM**

- 219. \$5,000 Top of the Rockies Stake

**Sunday, January 16, 2022**  
**CINCH Arena in the Events Center**  
**Hunter/Jumper Show**

**7 AM**

- 220. Children's Hunter 14 & Under
- 221. Children's Hunter U/S 14 & Under

- 222. Children's Hunter 15-17
- 223. Children's Hunter U/S 15-17
- 224. Amateur Owner Hunter 18-35
- 225. Amateur Owner Hunter Stake 18-35
- 226. Amateur Owner Hunter 36 & Over
- 227. Amateur Owner Hunter Stake 36+
- 228. Dover/USEF Hunter Seat Medal
- 229. Small Junior Hunter
- 230. Small Junior Hunter Stake
- 231. Large Junior Hunter
- 232. Large Junior Hunter Stake
- 233. Hunt Seat Equitation (flat) 11& Under
- 234. Hunt Seat Equitation (flat) 12-14
- 235. Hunt Seat Equitation (flat) 15-17
- 236. Hunt Seat Equitation (flat) Champ  
Break
- 237. Low Adult Amateur Jumper
- 238. Low Children's Jumper
- 239. High Adult Amateur Jumper
- 240. High Children's Jumper
- 241. Junior/Amateur-Owner Jumper Stake

**Sunday, January 16, 2022**  
**CINCH Arena in the Events Center**  
**Wild West Show**

**4 PM (T)**

**Monday, January 17, 2022**  
**CINCH Arena in the Events Center**  
**Hunter/Jumper Show**

**7 AM**

- 242. THIS National Children's Medal
- 243. Children's Hunter 14 & Under
- 244. Children's Hunter Stake 14 & Under
- 245. Children's Hunter 15-17
- 246. Children's Hunter Stake 15-17  
Break
- 247. Low Adult Amateur Jumper Stake
- 248. Low Children's Jumper Stake
- 249. High Adult Amateur Jumper Stake
- 250. High Children's Jumper Stake

**Monday, January 17, 2022**  
**CINCH Arena in the Events Center**  
**Xtreme Dogs**

**3 PM (T)**

**Monday, January 17, 2022**  
**CINCH Arena in the Events Center**  
**Hunter/Jumper Show**

**7 PM (T)**

- 251. \$40,000 NWSS Grand Prix presented by Monarch Casino

**Tuesday, January 18, 2022**  
**CINCH Arena in the Events Center**  
**National Western Horseman's Challenge**

**8 AM**

- 252. Individual Rounds

**Tuesday, January 18, 2022**  
**CINCH Arena in the Events Center**  
**Xtreme Dogs**

**6:30 PM (T)**

**Wednesday, January 19, 2022**  
**CINCH Arena in the Events Center**  
**National Western Horseman's Challenge**

**8 AM**

- 253. Team Challenge
- 254. Speed Challenge
- 255. Collegiate Challenge

**Wednesday, January 19, 2022**  
**CINCH Arena in the Events Center**  
**An Evening of Dancing Horses®** presented by 9NEWS

**7 PM (T)**

**Thursday, January 20, 2022**  
**CINCH Arena in the Events Center**  
**Draft Horse, Mule & Donkey Show**

256. Open Donkey Trail  
 257. Senior Mule Trail  
 258. Junior Mule Trail  
 259. Amateur Mule Trail  
 260. Youth Mule Trail  
 261. Junior Mule Ranch Riding  
 262. Senior Mule Ranch Riding  
 Break  
 263. Gelding Team  
 264. Mare Team  
 265. 4-Horse Gelding Hitch  
 266. Mare Unicorn Hitch

**9 AM**

297. Junior Mule Hunter Under Saddle  
 298. Senior Mule Hunter Under Saddle  
 299. 4-Horse Mare Hitch  
 300. Open Mule Parade Hitch  
 301. Open Donkey Barrel Race  
 302. Youth Mule Barrel Race  
 303. Junior Mule Hunter Hack  
 304. Senior Mule Hunter Hack

**Thursday, January 20, 2022**  
**CINCH Arena in the Events Center**  
 Horsemanship Clinic – guest TBA

**3:30 PM**

**Thursday, January 20, 2022**  
**CINCH Arena in the Events Center**  
**An Evening of Dancing Horses®** presented by 9NEWS

**7 PM (T)**

**Friday, January 21, 2022**  
**CINCH Arena in the Events Center, North**  
**Draft Horse, Mule & Donkey Show**

**8 AM**

267. Draft Yearling Stallions  
 268. Draft Two Year Old Stallions  
 269. Draft Three Years & Older Stallions  
 Grand & Res Champ Draft Stallion  
 270. Draft Yearling Mares  
 271. Draft Two Year Old Mares  
 272. Draft Three Year Old Mares  
 273. Draft Four Years & Older Mares  
 Grand & Res Champion Draft Mare  
 274. Draft Three Years- Geldings  
 275. Draft Four Years & Older Geldings  
 Grand & Res Champ Draft Gelding  
 Champion of Champions Draft Horse  
 276. Draft Youth Showmanship 12-14  
 277. Draft Youth Showmanship 15-18

**Friday, January 21, 2022**  
**CINCH Arena in the Events Center, South**  
**Draft Horse, Mule & Donkey Show**

**8 AM**

278. Three- Saddle Mules Molly  
 279. Three- Saddle Mules John  
 280. Four+ Saddle Mules Molly  
 281. Four+ Saddle Mules John  
 282. Draft Mules All Ages  
 Grand & Res Champ Mule  
 283. Youth Mule Showmanship 13 & Under  
 284. Youth Mule Showmanship 14-18  
 285. Amateur Mule Showmanship  
 286. Jennets & Geldings (48.01"+)  
 287. Jacks (48.01"+)  
 Grand & Res Champ Donkey  
 288. Open Donkey Showmanship All Ages

**Friday, January 21, 2022**  
**CINCH Arena in the Events Center**  
**Draft Horse, Mule & Donkey Show**

**12 PM**

289. Draft/Mule Team Log Skid Race  
 290. Amateur Team  
 291. Open Donkey Hunter Under Saddle  
 292. Gelding Unicorn Hitch  
 293. Youth Mule Hunter Under Saddle  
 294. Open Mule Pleasure Driving Hitch  
 295. Mare Cart  
 296. Amateur Mule Hunter Under Saddle

**Friday, January 21, 2022**  
**CINCH Arena in the Events Center**  
**Draft Horse, Mule & Donkey Show**  
 334A. Draft/Mule Feed Team Race - A  
 305. Open Mule Flag Race  
 306. Classic 6-Horse Hitch  
 307. Light Weight Pull

**7 PM (T)**

**Saturday, January 22, 2022**  
**CINCH Arena in the Events Center**  
**Draft Horse, Mule & Donkey Show**  
 308. Open Mule Obstacle Driving Single  
 309. Open Mule Obstacle Driving Team  
 310. Draft Obstacle Driving Hitch  
 311. Open Mule Keyhole Race  
 312. Open Mule Pole Bending  
 313. Classic Cart

**8 AM**

**Saturday, January 22, 2022**  
**CINCH Arena in the Events Center**  
**Draft Horse, Mule & Donkey Show**

**1 PM (T)**

334B. Draft/Mule Feed Team Race - B  
 314. Ladies Team  
 315. Open Mule Barrel Race  
 316. Junior Cart 15-18  
 317. Working Team  
 318. Youth Mule Western Pleasure  
 319. Middle Weight Pull

**Saturday, January 22, 2022**  
**CINCH Arena in the Events Center**  
**Draft Horse, Mule & Donkey Show**

**6 PM (T)**

Youth Equestrian Showcase Presentation  
 334C. Draft/Mule Feed Team Race - C  
 320. Classic 6-Horse Hitch  
 321. Senior Mule Western Pleasure  
 322. Ladies Cart

**Sunday, January 23, 2022**  
**CINCH Arena in the Events Center**  
**Draft Horse, Mule & Donkey Show**

**9 AM**

323. Junior Cart 12-14  
 324. Amateur Mule Western Pleasure  
 325. Mens Cart  
 326. Junior Driving Team 12-14  
 327. Open Donkey Western Pleasure  
 328. Open Mule/Donkey Costume  
 329. Open Mule Pleasure Driving Single  
 330. Youth Mule Pleasure Driving Single  
 331. Junior Driving Team 15-18  
 332. Open Donkey Pleasure Driving Single  
 333. Open Mule Drive & Ride

**Sunday, January 23, 2022**  
**CINCH Arena in the Events Center**  
**Draft Horse, Mule & Donkey Show**

**1 PM (T)**

334. Draft/Mule Feed Team Race - Final  
 335. 8-Horse Hitch  
 336. Junior Mule Western Pleasure  
 Mule & Donkey High Point Presentation  
 337. Heavy Weight Pull

# YOUTH RANCH HORSE MENTOR MATCHUP

January 8, 2022  
CINCH Arena in the Events Center

APPLICATIONS DUE: October 31, 2021  
Application available: [NationalWestern.com/horse-shows/horse-exhibitors](http://NationalWestern.com/horse-shows/horse-exhibitors)

ARRIVAL: To be scheduled and will not begin prior to January 7, 2022 12:00 p.m.  
All Mentor Matchup horses must vacate by: January 9, 2022 5:00 p.m.

**All exhibitors in the 2022 Horse Show will be asked to fill out a digital Horse Event Participation Declaration upon animal arrival.**

The National Western Youth Ranch Horse Mentor Matchup was created to provide local equestrian youth an opportunity to learn and compete during the National Western Stock Show through relevant hands-on educational activities with their equine partner and top equine professionals.

Up to 10 outstanding individuals, ages 14-21, from Colorado and Wyoming will be selected to participate. Selected youth will be matched with an industry professional who will act as their "coach" for the day. They will be given one-on-one practice time in the morning followed by a competition in the afternoon.

Selections will be based on:

1. Horse and rider connection and potential
2. Desire to be involved in the equine industry
3. Professionalism
4. Humane and respectful treatment of all animals and individuals

Applications will be accepted through the NWSS website ([NationalWestern.com/horse-shows/horse-exhibitors/](http://NationalWestern.com/horse-shows/horse-exhibitors/)) through October 31, 2021. Interested youth must submit a completed application, including a video showing the rider's ability and the safety of the horse/rider pair working cattle. Prior to applying, please read the Rules and Regulations beginning on page 11 of this Premium List concerning rules, health requirements and other information as well as the Program Specifications accompanying the application on the website.

The competition phases will follow appropriate AQHA, NRHA & NRCHA guidelines and rules.

AWARDS: Champion award and \$2,000 scholarship, Reserve Champion award and \$1,000 scholarship, ribbons 1st-10th. All entries will be asked to ride for awards and photos. Scholarship money is provided by the National Western Scholarship Trust and will be awarded to the school of choice or held in escrow until registered for admittance. The winning exhibitor will receive a gift certificate for a pair of CINCH jeans to help continue their winning style. CINCH believes in the hard work of the NWSS competitors and strives to support that through the Cinch 2 Win program.

## CINCH®

ENTRY FORM: Once notified of selection, youth will receive an entry form to officially enter and commit to participating in the event.

MEETING: Selected youth will be required to attend a rider's meeting immediately prior to the event. Youth will be notified of the time and location once selected.

PARKING: Vehicle parking is included with your exhibitor entry or ticket purchase. Lot H is reserved for exhibitors with a parking pass. There are a limited amount of passes per division. Passes can be requested on your horse entry at a limit of one per horse. Upon move in, additional passes can be picked up from the Horse Show Office on a first come, first served basis. Exhibitors may park in any NWSS designated lot (including the Coliseum parking lot) free of charge.

TRAILER PARKING: Trailers will be directed to the appropriate trailer parking lot. Passes may be purchased on your entry or at the gate.

# INVITATIONAL RANCH RODEO

PRESENTED BY COLORADO BARRICADE

Saturday, January 8, 2022 5:30 p.m. (Ticketed Event)  
CINCH Arena in the Events Center

ARRIVAL: To be scheduled and will not begin prior to January 7, 2022 12:00 p.m.  
All Ranch Rodeo horses must vacate by: January 9, 2022 5:00 p.m.

**All exhibitors in the 2022 Horse Show will be asked to fill out a digital Horse Event Participation Declaration upon animal arrival.**

**new** \$10,000 added plus 100% entry fee payback.

The National Western prides itself on being the world's premier center for America's western heritage. Teams for the Invitational Ranch Rodeo will be invited based on a variety of criteria with the intention of upholding and aligning with the quality, competition and entertainment of the event and National Western. The Invitational Ranch Rodeo will consist of eight four-man teams competing in four events. The entry fee is \$2,000 per team with 100% payback and \$10,000 added. The following are criteria the selection committee utilizes:

1. The previous year's National Western Invitational Ranch Rodeo winning team will receive an invitation for the current year's event.
2. The most current WRCA World Champion Ranch Rodeo team will receive an invitation for the current year's event.
3. Additional teams will be selected based on their success at the National Western Invitational Ranch Rodeo, credentials from other ranch rodeos, ranch history and sportsmanship.

Prior to submitting entries, read the Rules and Regulations beginning on page 11 of this Premium List concerning rules, health requirements and other information.

AWARDS: Overall team award, Top Hand award, Top Horse award and Excellence in Animal Care award. All entries will be asked to ride for awards and photos. The winning team will receive four gift certificates for a pair of CINCH jeans to help continue their winning style. CINCH believes in the hard work of the NWSS competitors and strives to support that through the Cinch 2 Win program.

## CINCH®

ENTRY FORM: Once notified of selection, teams will receive an entry form to officially enter and commit to participating in the event.

EXCELLENCE IN ANIMAL CARE AWARD: Ranch Rodeo is based on the western way of life and the heritage of ranching. This award provides recognition to the Ranch Rodeo team who is mindful of the care and handling of all livestock during the Invitational Ranch Rodeo and displays proper and respectable animal husbandry practices while being cognizant of the competitive atmosphere.

PARKING: Vehicle parking is included with your exhibitor entry or ticket purchase. Lot H is reserved for exhibitors with a parking pass. There are a limited amount of passes per division. Passes can be requested on your horse entry at a limit of one per horse. Upon move in, additional passes can be picked up from the Horse Show Office on a first come, first served basis. Exhibitors may park in any NWSS designated lot (including the Coliseum parking lot) free of charge.

#### PRIZE MONEY:

Event winner = \$2,000

Composite    1st = 55%       2nd = 30%       3rd = 15%

TRAILER PARKING: Trailers will be directed to the appropriate trailer parking lot. Passes may be purchased on your entry or at the gate.





## **LITTLETON EQUINE MEDICAL CENTER**

*Littleton Large Animal Clinic Since 1950*

Founded as Littleton Large Animal Clinic in 1950, Littleton Equine Medical Center has provided the Rocky Mountain region with professional veterinary care for over 50 years.

**Littleton Equine Medical Center is proud to provide on-site veterinary care during the National Western Stock Show, Rodeo and Horse Show.**

Our veterinarians will be on-grounds during show hours in the southwest corner of the Events Center stable. After-hours emergency care information will be posted.



*Littleton Equine Medical Center  
8025 S. Santa Fe Dr. Littleton, CO 80120  
ph 303.794.6359 fx 303.794.9466  
littlonequine@littlonequine.com*

# \$25,000 RAM INVITATIONAL FREESTYLE REINING & YOUTH FREESTYLE REINING SHOWCASE

NRHA Approved

Sunday, January 9, 2022 2:00 p.m. (Ticketed Event)  
CINCH Arena in the Events Center

APPLICATIONS DUE: September 30, 2021

Application available: [NationalWestern.com/horse-shows/horse-exhibitors](http://NationalWestern.com/horse-shows/horse-exhibitors)

ARRIVAL: To be scheduled and will not begin prior to January 7, 2022 12:00 p.m.  
All Freestyle Reining horses must vacate by: January 10, 2022 9:00 a.m.

**All exhibitors in the 2022 Horse Show will be asked to fill out a digital Horse Event Participation Declaration upon animal arrival.**

Judges:

Donnie Bricker, Temecula, CA

Ollie Griffith, Dublin, OH

Doug Milholland, Purcell, OK



The National Western prides itself on being the world's premier center for America's western heritage. Riders for the RAM Invitational Freestyle Reining will be invited based on a variety of criteria with the intention of upholding and aligning with the quality, competition and entertainment of the event and National Western. The RAM Invitational Freestyle Reining will consist of 14 riders competing for \$25,000.

Anonymous professionals within the reining industry will be sought each year to offer their selection advice. To be considered, please complete the consideration form on our website ([www.nationalwestern.com/horse-shows/horse-exhibitors](http://www.nationalwestern.com/horse-shows/horse-exhibitors)) for the 2022 RAM Invitational Freestyle Reining by September 30, 2021.

The selections will be based on quality, talent, creativity and entertainment. The winner of the previous year's RAM Invitational Freestyle Reining will receive an invitation for the current year's event. Initial invitations will be extended in November.

Prior to applying, read the Rules and Regulations beginning on page 11 of this Premium List concerning rules, health requirements and other information. All riders and owners (including business entities) of horses showing in NRHA approved competition must be members in good standing. Horses competing in NRHA approved competition may be required to have a competition license.

AWARDS: 1st place award, People's Choice award, ribbons 1st-14th. All entries will be asked to ride for awards and photos.

#### PRIZE MONEY:

1st = 26%	2nd = 18%	3rd = 13%	4th = 11%	5th = 8%	6th = 6%	7th = 5%
8th = 4%	9th = 3%	10th = 2%	11th = 1%	12th = 1%	13th = 1%	14th = 1%

#### National Western Youth Freestyle Reining Showcase

This event will provide local youth within the equine industry an opportunity to showcase their talents in freestyle reining and be recognized during a prestigious event at the National Western Stock Show. Selected youth will perform prior to the \$25,000 RAM Invitational Freestyle Reining. Completed applications must be submitted no later than September 30, 2021.



Program specifications and application are on the NWSS

website ([www.nationalwestern.com/horse-shows/horse-exhibitors](http://www.nationalwestern.com/horse-shows/horse-exhibitors)). Interested youth must be a Colorado or Wyoming resident between 14-21 years of age and will be selected based on the procedure for the RAM Invitational Freestyle Reining. A video and application should show a horse/rider pair's potential for a freestyle reining performance. Riders must have a current NRHA membership card and horses must have a current NRHA license to be considered. Selections will be based on quality, talent, creativity and entertainment. Initial invitations will be extended in November.

**AWARDS:** All riders will receive showcase ribbons and be asked to ride for recognition and photos.

**ENTRY FORM:** Once notified of selection for both the RAM Invitational Freestyle Reining and the Youth Freestyle Reining Showcase, exhibitors will receive an entry form to officially enter and commit to participating in the event.

**PARKING:** Vehicle parking is included with your exhibitor entry or ticket purchase. Lot H is reserved for exhibitors with a parking pass. There are a limited amount of passes per division. Passes can be requested on your horse entry at a limit of one per horse. Upon move in, additional passes can be picked up from the Horse Show Office on a first come, first served basis. Exhibitors may park in any NWSS designated lot (including the Coliseum parking lot) free of charge.

**TRAILER PARKING:** Trailers will be directed to the appropriate trailer parking lot. Passes may be purchased on your entry or at the gate.



# Quarter Horse & Paint Horse Division

AQHA & APHA Approved

January 10-12, 2022  
Denver Coliseum

**PRE-ENTRY REQUIRED.** All entries must be submitted online through the website. Entries will tentatively open November 10, 2021 and close December 10, 2021. **Management reserves the right to cap entries in the AQHA/APHA Division. Complete entries with payment received by the entry closing date will be processed by timestamp.**

**ARRIVAL:** To be scheduled and will not begin prior to January 9, 2022 5:00 p.m.

All Quarter Horses and Paint Horses must be stalled in the Coliseum unless written approval is granted. A limited number of stalls will be available Sunday in the Coliseum barn.

**DEPARTURE:** Immediately after final class, to be vacated no later than January 12, 2022 3:00 p.m.

**All exhibitors in the 2022 Horse Show will be asked to fill out a digital Horse Event Participation Declaration upon animal arrival.**

Judges:

David Avery, Amarillo, TX

Brad Jones, Ogden, UT\*

Steve Meadows, Staunton, VA

\*APHA Only

Bonnie Jo Clay, Tioga, TX

Larry Little, Mebane, NC

Tracy Willis, Rogersville, MO

Prior to submitting entries, read the Rules and Regulations beginning on page 11 of this Premium List concerning rules, health requirements and other information.

## ALL FEES PAYABLE IN U.S. FUNDS ONLY

AQHA Exhibitor Fee/back # (incl office fee, stall fee, Assn. fees, exh badge) .....\$135.00

APHA Exhibitor Fee/back # (incl office fee, stall fee, Assn. fees, exh badge) .....\$130.00

Entry Fee per class (non-cattle): .....\$25.00

Entry Fee per class (cattle) (\$15 added back) .....\$65.00

Cattle Fee for Amateurs entering correlating Open class: .....\$35.00

Post Entry Fee per horse (additional, by approval only): .....\$25.00

Tack Stall Fee per stall: .....\$45.00

Vehicle Parking Pass: .....No charge

Trailer Parking Pass: .....\$20.00

Additional Exhibitor Badges (daily grounds admission): .....\$35.00

(See Rules and Regulations for explanation of Badges)

This show will be run under the current guidelines of the AQHA & APHA. Please see the current rule books for questions or clarifications.

**AWARDS:** Ribbons 1st-6th, Halter Grand Champion Awards, Finals Champion Awards, High Point Awards for AQHA Open, AQHA Amateur, AQHA Youth, APHA Open, APHA Amateur, APHA Youth.

The winning exhibitor in classes 130 and 133 will receive a gift certificate for a pair of CINCH jeans to help continue their winning style. CINCH believes in the hard work of the NWSS competitors and strives to support that through the Cinch 2 Win program.

# CINCH®

**HIGH POINTS:** Will be based on a 9-8-7-6, etc. point system, i.e. if 9 or more horses show in a class, the first place horse will receive 9 points, if only 4 shown then 4-3-2-1. There are no bonus points for Grand or Reserve. These points are per judges' placing. Horse and/or horse/rider combination with the most points will be declared the National Western High Point in that division (Open, Amateur, Youth). Amateur and Youth categories are based on one (1) horse, one (1) rider combination. In the event of a tie, High Point will be broken as follows: (1) total number of horses shown against (2) number of classes shown in.

**PARKING:** Vehicle parking is included with your exhibitor entry or ticket purchase. Lot H is reserved for exhibitors with a parking pass. There are a limited amount of passes per division. Passes can be requested on your horse entry at a limit of one per horse. Upon move in, additional passes can be picked up from the Horse Show Office on a first come, first served basis. Exhibitors may park in any NWSS designated lot (including the Coliseum parking lot) free of charge.

**TRAILER PARKING:** Trailers will be directed to the appropriate trailer parking lot. Passes may be purchased on your entry form or at the gate.

**FINALS:** The finals classes are not association approved and do not count toward points. Each division will have a breed final as well as a head-to-head competition. The top ten scores from each breed's tie-down roping classes will compete in the tie-down roping final. The top ten times from each breed's breakaway roping classes will compete in the breakaway final. The top five scores from each breed's heading and heeling classes will compete in the team roping final. The finals will be time based with no scores or times carried forward. Each class winner will then go head-to-head for an overall winner. A Final for amateurs will be run IF the correlating preliminary classes (youth and amateur combined) have at least 10 entries (excluding breakaway).

126. APHA Barrel Racing Final (qualifying classes: 79, 80, 81, 82, 83)

127. AQHA Barrel Racing Final (qualifying classes: 84, 85, 86)

128. APHA Tie-Down Roping Final (qualifying classes: 37, 38, 39, 40, 41, 42, 43, 44, 45, 46, 47, 48)

129. AQHA Tie-Down Roping Final (qualifying classes: 01, 06, 11, 12, 71, 72)

130. APHA vs. AQHA Tie-Down Roping Final (winners from 128 and 129)

131. APHA Breakaway Roping Final (qualifying classes: 33, 34, 35, 36, 49, 50, 51, 52)

132. AQHA Breakaway Roping Final (qualifying classes: 13, 14, 73, 74)

133. APHA vs. AQHA Breakaway Roping Final (winners from 131 and 132)

134. APHA Team Roping Final (qualifying classes: 15, 16, 17, 18, 19, 20, 21, 22, 23, 24, 25, 26, 59, 60, 61, 62, 63, 64, 65, 66, 67, 68, 69, 70)

135. AQHA Team Roping Final (qualifying classes: 02, 03, 04, 05, 07, 08, 09, 10, 75, 76, 77, 78)

136. APHA vs. AQHA Team Roping Final (winners from 134 and 135)

#### PRIZE MONEY:

\$10,000 in prize money will be provided by the National Western Stock Show for each breed. The finals classes are supported by the American Paint Horse Association and the National Western Stock Show and will have a minimum payout of \$3,000.



#### Regular classes:

# Shown	1st	2nd	3rd	4th	5th	6th	7th	8th
1-3	100%							
4-7	60%	40%						
8-12	50%	30%	20%					
13-16	40%	30%	20%	10%				
17-21	30%	25%	20%	15%	10%			
22-26	30%	24%	18%	12%	9%	7%		
27-31	28%	23%	16%	12%	9%	7%	5%	
32-37	25%	20%	15%	12%	10%	8%	6%	4%



# REINED COW HORSE DIVISION

NRCHA Approved

January 11-12, 2022  
CINCH Arena in the Events Center

**PRE-ENTRY REQUIRED.** All entries must be submitted online through the website. Entries will tentatively open November 5, 2021 and close December 1, 2021. **Management reserves the right to cap entries in the NRCHA Division. Complete entries with payment received by the entry closing date will be processed by timestamp.**

ARRIVAL: To be scheduled and will not begin prior to January 9, 2022 5:00 p.m.

DEPARTURE: Immediately after final class, to be vacated no later than January 12, 2022 4:00 p.m.

**All exhibitors in the 2022 Horse Show will be asked to fill out a digital Horse Event Participation Declaration upon animal arrival.**

Judges: Joe Carter, St. George, ON, CAN

Buddy Fisher, Abilene, TX

Prior to submitting entries, read the Rules and Regulations beginning on page 11 of this Premium List concerning rules, health requirements and other information.

## ALL FEES PAYABLE IN U.S. FUNDS ONLY

Open Derby Exh Fee (incl office fee, stall, Assn. fee, entry fee, exh badge) .....	\$550.00
Novice Horse Derby Exh. Fee (incl ofc, stall, Assn. fee, entry fee, exh badge) .....	\$300.00
<i>(If also entered in Open Derby, addition of Novice Horse Derby class is \$100)</i>	
Ltd Open Derby Exh. Fee (incl office, stall, Assn. fee, entry fee, exh badge) .....	\$350.00
<i>(If also entered in Open Derby, addition of Ltd. Open Derby class is \$100)</i>	
Open Hackamore Exh. Fee (incl office, stall, Assn. fee, entry fee, exh badge) .....	\$200.00
<i>(If also entered in Open Derby, addition of Open Hackamore class is \$100)</i>	
Non Pro Derby Exh. Fee (incl office, stall fee, Assn. fee, entry fee, exh badge) .....	\$350.00
Non Pro Ltd Derby Exh Fee (inclu office, stall fee, Assn. fee, entry fee, exh badge) ..	\$275.00
Non Pro Limited. Exh. Fee (incl office, stall, Assn. fee, entry fee, exh badge) .....	\$200.00
Open Bridle Exh. Fee (incl office, stall, Assn. fee, entry fee, exh badge) .....	\$200.00
Non Pro Bridle Exh. Fee (incl office, stall, Assn. fee, entry fee, exh badge) .....	\$200.00
Non Pro Hackamore Exh. Fee (incl ofc, stall, Assn. fee, entry fee, exh badge) .....	\$200.00
Help Horse Stall Fee per stall (limit 1 for every 3 horse/tack stalls): .....	\$5.00
Tack Stall Fee per stall: .....	\$45.00
Vehicle Parking Pass: .....	No charge
Trailer Parking Pass: .....	\$20.00
Additional Exhibitor Badges (daily grounds admission): .....	\$35.00
<i>(See Rules and Regulations for explanation of Badges)</i>	

**AWARDS:** The composite winner in each division will receive an award and composite placings awarded ribbons 1st-6th.

NRCHA: Approved shows are restricted to NRCHA members in good standing. Appropriate and legal headgear for the age of the horse is required (according to NRCHA rules).

**PARKING:** Vehicle parking is included with your exhibitor entry or ticket purchase. Lot H is reserved for exhibitors with a parking pass. There are a limited amount of passes per division. Passes can be requested on your horse entry at a limit of one per horse. Upon move in, additional passes can be picked up from the Horse Show Office on a first come, first served basis. Exhibitors may park in any NWSS designated lot (including the Coliseum parking lot) free of charge.

**PRIZE MONEY:** \$15,500 in added prize money will be split: \$7,500 Open Derby, \$1,500 Novice Horse Derby, \$2,000 Limited Open Derby, \$2,000 Non Pro Derby, \$1,000 Non Pro Limited Derby, \$250 Non Pro Limited, \$250 Non Pro Bridle, \$250 Non Pro Hackamore, \$500 Open Bridle, \$250 Open Hackamore. The following amounts will be added back: Open Derby=\$250/entry, Novice Horse Derby=\$50/entry, Limited Open Derby=\$50/entry, Non Pro Derby=\$90/entry, Non Pro Limited Derby=\$50/entry, Non Pro Limited=\$50/entry, Non Pro Bridle=\$50/entry, Non Pro Hackamore=\$50/entry, Open Bridle=\$50/entry, Open Hackamore=\$50/entry.

**TRAILER PARKING:** Trailers will be directed to the appropriate trailer parking lot. Passes may be purchased on your entry or at the gate.

**TOP 25**

ONLINE MBA  
PROGRAMS IN  
THE WORLD\*

**#1**

BEST 4-YEAR  
COLLEGE IN  
COLORADO\*

**TOP 15%**

BEST COLLEGE  
LOCATIONS IN  
AMERICA\*

**3x**

STARS  
PLATINUM  
RATING\*

# CHARGING FORWARD

That's what Rams do.

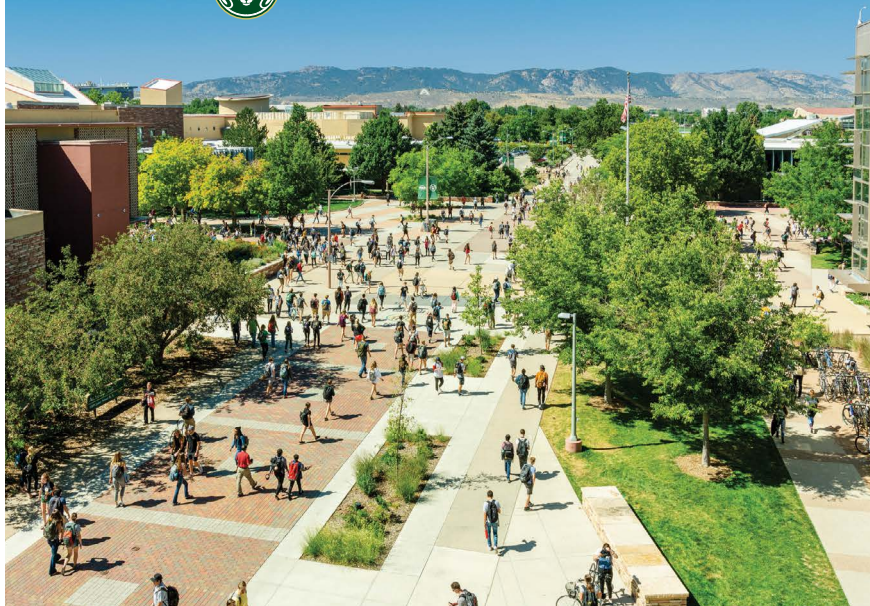
This fall, we are planning for the best possible return with a reengaged, fully open campus with thriving students and a new “normal” experience that we all have so greatly missed. We look forward to again sharing the moments that make our CSU collegiate experience so wonderful.

Join us: [colostate.edu](https://colostate.edu) | COVID-19 protocols: [covid.colostate.edu](https://covid.colostate.edu)

\*Rankings: [admissions.colostate.edu/rankings](https://admissions.colostate.edu/rankings)



**COLORADO STATE UNIVERSITY**



USEF Competition Name: National Western Stock Show

USEF #: 642

Competition Divisions & Ratings:

- A A/O Hunter, Green Hunter, Jr. Hunter, Perf Hunter, High Perf Hunter
- C Adult Amateur Hunter, Children's Hunter
- N Hunter Seat Equitation
- 4 Jumper Level



— REQUIRED OF ALL PARTICIPANTS —

LEARN ABOUT MAAP POLICIES

Read about these and more at  
[usef.org/MAAPP](https://usef.org/MAAPP)



SafeSport Training



One-On-One Interactions



Local Travel



Social Media and  
Electronic Communications

REPORT VIOLATIONS



[usef.org/safe-sport/reporting](https://usef.org/safe-sport/reporting)  
859-225-6915



# HUNTER/JUMPER DIVISION

USEF, USHJA & CHJA Approved  
USEF National Rated

January 13-17, 2022  
CINCH Arena in the Events Center

**PRE-ENTRY REQUIRED.** All entries must be submitted online through the website. Entries will tentatively open November 15, 2021 and close December 15, 2021. **Management reserves the right to cap entries in the USEF/USHJA Division. Complete entries with payment received by the entry closing date will be processed by timestamp with priority given to entries in ticketed performances to ensure high quality events.**

**HUNTER ARRIVAL:** To be scheduled and will not begin prior to January 12, 2022 3:00 p.m.

**JUMPER ARRIVAL:** To be scheduled and will not begin prior to January 13, 2022 6:00 a.m.

**HUNTER DEPARTURE:** Immediately after final class, to be vacated no later than January 17, 2022 12:00 p.m.

**JUMPER DEPARTURE:** Immediately after final class, to be vacated no later than January 18, 2022 9:00 a.m.

**All exhibitors in the 2022 Horse Show will be asked to fill out a digital Horse Event Participation Declaration upon animal arrival.**

Judge: Irving Evans, Fremont, NH  
Course Designer: Tommy Brawley, Marshall, TX  
USEF Secretary: Sally Hudson, Monterey, CA

GP Judge: Brian Lookabill, Lexington, KY  
USEF Steward: Nancy Noble, Lexington, KY  
EMT: Stadium Medical

Prior to submitting entries, read the Rules and Regulations beginning on page 11 of this Premium List concerning rules, health requirements and other information.

## ALL FEES PAYABLE IN U.S. FUNDS ONLY

Exhibitor Fee/back # (incl office fee, stall fee, Fed. fees (\$23), equip fee, exh badge):	...\$175.00
Entry Fees:	See Division
Post Entry Fee per horse (additional, by approval only):	\$25.00
USEF Membership Fee:	\$80.00
USEF Show Pass Fee:	\$45.00
USHJA Show Pass Fee:	\$30.00
Tack Stall Fee per stall:	\$70.00
Vehicle Parking Pass:	No charge
Trailer Parking Pass:	\$50.00
Additional Exhibitor Badges (daily grounds admission):	\$35.00
(See Rules and Regulations for explanation of Badges)	

In order to compete in any Hunter, Jumper or Equitation classes at recognized competitions as an exhibitor, rider, trainer, or his/her agents, a person must be a member of the USEF & USHJA or pay the appropriate Show Pass fees. Exhibitors participating in Amateur Classes must be a regular member of USEF holding a current Amateur card. A non-member who wishes to participate in a USEF competition must pay a Show Pass fee (See GR205).

## USEF MEMBERSHIP STATEMENT

Life, senior active and junior active members shall be eligible to participate in all classes at Regular Competitions, Eventing Competitions at the Modified Level or above and Combined Driving Competitions at the Advanced Level, Dressage, Reining and Vaulting Competitions and Endurance Rides. A nonmember may participate as a handler, rider, driver, owner, lessee, agent, coach or trainer at Regular Competitions, Eventing Competitions, Dressage Competitions, Reining Competitions and Combined Driving Competitions upon payment of a \$45 Show Pass fee. Participants in the following classes are exempted from the requirements of this rule: 1) leadline; 2) exhibitions; 3) games and races; 4) classes for 4-H members; 5) walk trot (exception: Friesian performance FR218) and academy classes (academy classes are classes limited to horses used regularly in a lesson program); 6) USDF introductory level tests, pas de deux and quadrille classes; 7) NRHA Endorsed Reining Competitions; 8) Opportunity classes, 9) citizens of other nations who have proof, in English, of current membership in good standing of their own National Federation, 10) USEA beginner novice division; and 11) assistant handlers in Dressage Sport Horse Breeding classes.

**HACKING:** Jumpers will be allowed to hack January 13 following class 176

**SCHOOLING:** There will be paid hunter schooling sessions scheduled for:

Thursday, January 13 prior to class 155, exact time TBA

Friday, January 14 prior to class 179, exact time TBA

Saturday, January 15 prior to class 200, exact time TBA

Sunday, January 16 prior to class 220, exact time TBA

Each hunter schooling session will be \$10 per horse and entries wishing to school must be entered by 5 p.m. the day before. Hunter schooling sessions will only be held if a minimum of five horses are entered by the deadline, otherwise they may be canceled. Times will be determined based on the number of horses entered by the deadline. The schooling session times will be announced and posted by 5:30 p.m. the day before each schooling session. For safety, the number of horses in the arena will be monitored. Only horses entered in a hunter class will be allowed to enter, unless space warrants. Then it will be first come, first served. Horses scratching a schooling session after 5 p.m. the day before or not showing up for the entered schooling session will be charged for that session. Entries must wear a back number to be admitted to the ring. Attire will be informal. Boots or shoes with riding heels and protective headgear are required.

NWSS requests exhibitors submit biographies, ride for ribbons and photos and participate in a victory gallop in the following classes to enhance the production of the event:

199. \$15,000 Monarch Casino Gambler's Choice Jumper Stake

219. \$5,000 Top of the Rockies Jumper Stake

251. \$40,000 NWSS Grand Prix presented by Monarch Casino

**ATTIRE:** Proper attire is required in all Hunter, Equitation and Jumper classes. See USEF Rule GR801 for headgear requirements.

**CHAMPIONSHIPS:** Championships and Reserve Championships will be awarded after the last class of the division to the horse or rider with the greatest number of points accumulated in each championship division.

**DRUGS AND MEDICATION:** For every horse participating in any competition licensed by the Federation, a Federation fee will be collected. A portion will provide funds for research, inspection and enforcement of rules regarding use of medications and drugs. Horses entered in classes exempted from the Equine Drugs and Medication fee are also exempted from the balance of the Federation fee.

**JUMP ORDER:** Jump order is established by random computer draw in all divisions. A rotating jumping order will be utilized in all classes over fences.

**MICROCHIPPING:** As of December 1, 2017, all horses competing in classes that require USHJA horse registration must provide a microchip number that verifies their animal's identity in order to compete for points, money won or be eligible for Federation and/or USHJA programs and awards where horses are required to be recorded or registered.

**MOTORIZED VEHICLES:** See Rules and Regulations beginning on Page 11.

**NOTICE:** Every class offered herein which is covered by the Rules and Specifications of the current Federation Rule Book will be conducted and judged in accordance therewith. Exhibitors are responsible for a knowledge of the Rules and Regulations governing the horse show and for their own errors and omissions. In the case of a violation of a cross entry restriction, the exhibitor will forfeit the entry fee, class placing and prize money award.

**PARKING:** Vehicle parking is included with your exhibitor entry or ticket purchase. Lot H is reserved for exhibitors with a parking pass. There are a limited amount of passes per division. Passes can be requested on your horse entry at a limit of one per horse. Upon move in, additional passes can be picked up from the Horse Show Office on a first come, first served basis. Exhibitors may park in any NWSS designated lot (including the Coliseum parking lot) free of charge.

**PROTESTS:** Refer to USEF Rule GR603 and NWSS Rules and Regulations, beginning on page 11.

**SAFE SPORT:** Reminder: All USEF Life and Senior Active members, as well as participants who have regular contact with minor athletes, are required to comply with the U.S. Center for SafeSport training requirement to be eligible to participate in the competition. All participants must adhere to the U.S. Center for SafeSport Code, USEF Safe Sport Policy, and the Minor Athlete Abuse Prevention Policies. For more information about these can be found at [www.usef.org](http://www.usef.org).



**TIES:** Ties in Jumper Divisions will be broken by higher placing in the Stake, if neither competitor competed in the Stake, ties will stand. In Hunter divisions, ties will be broken in favor of whomever has more points over fences.

**TRAILER PARKING:** Trailers will be directed to the appropriate trailer parking lot. Passes may be purchased on your entry or at the gate.

**VETERINARIANS:** The official veterinarian is Littleton Equine Medical Center located in the southwest corner of the Events Center barn. Their emergency number is: 303.794.6359

## HUNTER DIVISION

**AWARDS:** Low Hunter: Ribbons 1st-8th All Other Hunter Divisions: To be awarded in accordance with USEF subchapter HU-127.3. Championship award and ribbon, Reserve Champion ribbon, ribbons 1st-8th. Equitation: Ribbons 1st-8th, Championship award.

**ENTRIES:** "A" or "B" rated sections with four (4) or more entries cannot be canceled. Therefore, sections with three (3) or less entries may be canceled.

**ZONE 8 SPECIFICATIONS:** Exhibitors are responsible for a knowledge of the Rules and Regulations governing the horse show and for their own errors and omissions. This show is run under Zone 8 (AZ, CO, NM, UT) specifications and in accordance with GR1111.4: CA, NV, ID, WY, NE, KS, OK, TX are contiguous states.

### Low Hunter

Class Fee: \$40 per class

Fences: 3'

Classes will close at 40 entries

Class #	Class Description
155.	Low Hunter
179.	Low Hunter

### Green Hunter 3'6"

Division Fee: \$250

Fences: 3'6"

Class #	Class Description	Added Money
162.	Green Hunter 3'6"	\$100
163.	Green Handy Hunter 3'6"	\$100
164.	Green Hunter Under Saddle 3'6"	\$100
184.	Green Hunter 3'6"	\$100
185.	Green Hunter Stake 3'6"	\$200

<b>PRIZE MONEY:</b>	<b>Classes:</b>	1st=35% 2nd=25% 3rd=20% 4th=12% 5th=8%
	<b>Stake:</b>	1st=30% 2nd=22% 3rd=18% 4th=12% 5th=10% 6th=8%

### Green Hunter 3'9"

Division Fee: \$250

Fences: 3'9"

Class #	Class Description	Added Money
165.	Green Hunter 3'9"	\$100
166.	Green Handy Hunter 3'9"	\$100
167.	Green Hunter Under Saddle 3'9"	\$100
186.	Green Hunter 3'9"	\$100
187.	Green Hunter Stake 3'9"	\$200

<b>PRIZE MONEY:</b>	<b>Classes:</b>	1st=35% 2nd=25% 3rd=20% 4th=12% 5th=8%
	<b>Stake:</b>	1st=30% 2nd=22% 3rd=18% 4th=12% 5th=10% 6th=8%

## High Performance Hunter

Division Fee: \$250 (may enter separately \$50/class)

Fences: 3'9"

Class #	Class Description	Added Money
168.	High Performance Hunter	\$200
169.	High Performance Handy Hunter	\$200
170.	High Performance Hunter Under Saddle	\$200
188.	High Performance Hunter	\$200
189.	High Performance Hunter Stake	\$600

PRIZE MONEY:      Classes:    1st=35%   2nd=25%   3rd=20%   4th=12%   5th=8%  
                         Stake:       1st=30%   2nd=22%   3rd=18%   4th=12%   5th=10%   6th=8%

## Performance Hunter

Division Fee: \$250 (may enter separately \$50/class)

Fences: 3'3"

Class #	Class Description	Added Money
156.	Performance Hunter 3'3"	\$200
157.	Performance Handy Hunter 3'3"	\$200
158.	Performance Hunter Under Saddle 3'3"	\$200
180.	Performance Hunter 3'3"	\$200
181.	Performance Hunter Stake 3'3"	\$500

Fences: 3'6"

159.	Performance Hunter 3'6"	\$200
160.	Performance Handy Hunter 3'6"	\$200
161.	Performance Hunter Under Saddle 3'6"	\$200
182.	Performance Hunter 3'6"	\$200
183.	Performance Hunter Stake 3'6"	\$500

PRIZE MONEY:      Classes:    1st=35%   2nd=25%   3rd=20%   4th=12%   5th=8%  
                         Stake:       1st=30%   2nd=22%   3rd=18%   4th=12%   5th=10%   6th=8%

## Adult Amateur Hunter

Division Fee: \$100 (may enter separately \$30/class)

Zone 8 Specifications: May not cross enter in any hunter class with fences exceeding 3'6" nor any jumper class exceeding 1.20m.

Fences: 3', spreads not to exceed fence height.

### Adult Amateur Hunter 18-35

Class #	Class Description	Added Money
171.	Adult Amateur Hunter 18-35	
172.	Adult Amateur Hunter Under Saddle 18-35	
190.	Adult Amateur Hunter 18-35	
191.	Adult Amateur Hunter Stake 18-35	\$250

### Adult Amateur Hunter 36-49

173.	Adult Amateur Hunter 36-49	
174.	Adult Amateur Hunter Under Saddle 36-49	
192.	Adult Amateur Hunter 36-49	
193.	Adult Amateur Hunter Stake 36-49	\$250

### Adult Amateur Hunter 50 & Over

175.	Adult Amateur Hunter 50 & Over	
176.	Adult Amateur Hunter Under Saddle 50 & Over	
194.	Adult Amateur Hunter 50 & Over	
195.	Adult Amateur Hunter Stake 50 & Over	\$250

PRIZE MONEY: Stakes:                    1st=30%   2nd=22%   3rd=18%   4th=12%   5th=10%   6th= 8%

## Amateur Owner Hunter

Division Fee: \$250

Zone 8 Specifications: Cannot cross enter in Adult Amateur Hunter.

Fences: 3'6"

### Amateur Owner Hunter 18-35 years

Class #	Class Description	Added Money
200.	Amateur Owner Hunter 18-35	\$200
201.	Amateur Owner Handy Hunter 18-35	\$200
202.	Amateur Owner Hunter Under Saddle 18-35	\$200
224.	Amateur Owner Hunter 18-35	\$200
225.	Amateur Owner Hunter Stake 18-35	\$500
Amateur Owner Hunter 36 & Over		
203.	Amateur Owner Hunter 36 & Over	\$200
204.	Amateur Owner Handy Hunter 36 & Over	\$200
205.	Amateur Owner Hunter Under Saddle 36 & Over	\$200
226.	Amateur Owner Hunter 36 & Over	\$200
227.	Amateur Owner Hunter Stake 36 & Over	\$500

PRIZE MONEY: Classes: 1st=35% 2nd=25% 3rd=20% 4th=12% 5th=8%  
Stakes: 1st=30% 2nd=22% 3rd=18% 4th=12% 5th=10% 6th=8%

## Children's Hunter

Division Fee: \$175 (may enter separately \$50/class)

Zone 8 Specifications: May not cross enter in Junior Hunter, any hunter class with fences exceeding 3'6" or any jumper class exceeding 1.20m.

Fences: 3', spreads not to exceed fence height.

Class #	Class Description	Added Money
220.	Children's Hunter 14 & Under	
221.	Children's Hunter Under Saddle 14 & Under	
243.	Children's Hunter 14 & Under	
244.	Children's Hunter Stake 14 & Under	\$250
222.	Children's Hunter 15-17	
223.	Children's Hunter Under Saddle 15-17	
245.	Children's Hunter 15-17	
246.	Children's Hunter Stake 15-17	\$250

PRIZE MONEY: Stakes: 1st=30% 2nd=22% 3rd=18% 4th=12% 5th=10% 6th=8%

## Junior Hunter

Division Fee: \$250

Junior Hunter must have an USEF measurement card. All Junior Hunters which do not possess a current measurement card will be measured. Horses will be measured Thursday, January 13, 2022 at 12:00 p.m. noon. PLEASE BRING A COPY OF REGISTRATION PAPERS AT TIME OF MEASUREMENT.

### Small Junior Hunter

Fences: 3'6"

Class #	Class Description	Added Money
207.	Small Junior Hunter	\$200
208.	Small Junior Handy Hunter	\$200
209.	Small Junior Hunter Under Saddle	\$200
229.	Small Junior Hunter	\$200
230.	Small Junior Hunter Stake	\$500

### Large Junior Hunter

Fences: 3'6"

Class #	Class Description	Added Money
210.	Large Junior Hunter	\$200
211.	Large Junior Handy Hunter	\$200
212.	Large Junior Hunter Under Saddle	\$200
231.	Large Junior Hunter	\$200
232.	Large Junior Hunter Stake	\$500

PRIZE MONEY: Classes: 1st=35% 2nd=25% 3rd=20% 4th=12% 5th=8%  
Stakes: 1st=30% 2nd=22% 3rd=18% 4th=12% 5th=10% 6th=8%

# EQUITATION

Exhibitors shall not have reached their 18th birthday by December 1, 2021 (persons born on December 1 shall assume the greater age).

Class #	Class Description	Class Fee
233.	Hunt Seat Equitation (flat) 11 & Under	\$25
234.	Hunt Seat Equitation (flat) 12-14	\$25
235.	Hunt Seat Equitation (flat) 15-17	\$25
236.	Hunt Seat Equitation (flat) Championship (To qualify must have competed in one (1) of the following classes: 233 or 234 or 235)	\$30
206.	ASPCA Horsemanship (Minimum of 8 fences at 3'6" height) (Riders and trainers must possess current ASPCA/NHSAA membership card or enter online at nhs.org)	\$30
228.	Dover Saddlery/USEF Hunter Seat Medal (Minimum of 8 fences to 3'6" height)	\$30
242.	THIS National Children's Medal (Minimum of 8 fences at 3'0" height)	\$30

## JUMPER DIVISION

All horses entered in the Jumper Division must be recorded with the Federation in order to receive points towards any USEF or USHJA Zone or Horse of the Year awards. Any change of a recorded horse's name and/or ownership must be recorded with the Federation in accordance with GR1105 and GR1107.

Every class offered herein which is covered by the Rules and Specifications of the current USEF Rule Book will be conducted and judged in accordance therewith.

Prize money in the Jumper Division will be awarded in accordance with JP108. Ties involving first place will be jumped off. Horses tied for other than first place will be pinned based on their time in the first round.

### Low Jumper

Class Fee: \$40 per class

Height: 1.00m class 176, 1.10m class 195

Classes will close at 50 entries

Class #	Class Description
177.	Low Jumper (Table II, Sec. 2 (c))
196.	Low Jumper (Table II, Sec. 1)

AWARDS: Ribbons 1st-8th

### Junior/Amateur Owner Jumper

Height: 1.30m

Class #	Class Description	Class Fee	Added Money
198.	Junior/Amateur Owner (Table II, Sec. 2 (c))	\$100	\$300 + \$50 per entry
218.	Junior/Amateur Owner (Table II, Sec. 1)	\$100	\$300 + \$50 per entry
241.	Junior/Amateur Owner Stake (Table II, Sec. 2 (b)) (Must be entered in at least one (1) qualifying class 198 or 218 in this section to enter stake)	\$150	\$300 + \$100 per entry

AWARDS: To be awarded in accordance with USEF rule JP110. Championship award and ribbon, Reserve Champion ribbon, ribbons 1st-8th.

PRIZE MONEY: 1st=20% 2nd=14% 3rd=12% 4th=12% 5th=11% 6th=11% 7th=10% 8th=10%

## Adult Amateur Jumper

Classes will close at 30 entries

Zone 8 Specifications: Low may not cross enter in any class held above 1.15m. High may not cross enter in any class held above 1.20m.

Class #	Class Description	Class Fee	Added Money
Height: 1.00m-1.05m			
214.	Low Adult Amateur Jumper (Table II, Sec. 2 (c))	\$50	
237.	Low Adult Amateur Jumper (Table II, Sec. 1)	\$50	
247.	Low Adult Amateur Jumper Stake (Table II, Sec. 2 (b))	\$100	\$500
	(Must be entered in at least one (1) qualifying class 214 or 237 in this section to enter stake)		
Height: 1.10m-1.15m			
216.	High Adult Amateur Jumper (Table II, Sec. 2 (c))	\$50	
239.	High Adult Amateur Jumper (Table II, Sec. 1)	\$50	
249.	High Adult Amateur Jumper Stake (Table II, Sec. 2 (b))	\$100	\$1,500
	(Must be entered in at least one (1) qualifying class 216 or 239 in this section to enter stake)		

AWARDS: To be awarded in accordance with USEF rule JP110. Championship award and ribbon, Reserve Champion ribbon, ribbons 1st-8th.

STAKE PRIZE MONEY: 1st=20% 2nd=14% 3rd=12% 4th=12% 5th=11% 6th=11% 7th=10% 8th=10%

## Children's Jumper

Classes will close at 30 entries

Zone 8 Specifications: Low may not cross enter in any class held above 1.15m. High may not cross enter in any class held above 1.20m.

Class #	Class Description	Class Fee	Added Money
Height: 1.00m-1.05m			
215.	Low Children's Jumper (Table II, Sec. 2 (c))	\$50	
238.	Low Children's Jumper (Table II, Sec. 1)	\$50	
248.	Low Children's Jumper Stake (Table II, Sec. 2 (b))	\$50	\$500
	(Must be entered in at least one (1) qualifying class 215 or 238 in this section to enter stake)		
Height: 1.10m-1.15m			
217.	High Children's Jumper (Table II, Sec. 2 (c))	\$50	
240.	High Children's Jumper (Table II, Sec. 1)	\$50	
250.	High Children's Jumper Stake (Table II, Sec. 2 (b))	\$50	\$1,500
	(Must be entered in at least one (1) qualifying class 217 or 240 in this section to enter stake)		

AWARDS: To be awarded in accordance with USEF rule JP110. Championship award and ribbon, Reserve Champion ribbon, ribbons 1st-8th.

PRIZE MONEY: 1st=20% 2nd=14% 3rd=12% 4th=12% 5th=11% 6th=11% 7th=10% 8th=10%

## Modified Jumper

Height: 1.20m

Classes will close at 40 entries

Class #	Class Description	Class Fee	Added Money
178.	Modified Jumper (Table II, Sec. 2 (c))	\$100	\$300 + \$50 per entry
197.	Modified Jumper (Table II, Sec. 1)	\$100	\$300 + \$50 per entry
213.	Modified Jumper Stake (Table II, Sec. 2 (b))	\$150	\$300 + \$100 per entry
	(Must be entered in at least one (1) qualifying class 178 or 197 in this section to enter stake)		

AWARDS: To be awarded in accordance with USEF rule JP110. Championship award and ribbon, Reserve Champion ribbon, ribbons 1st-8th.

PRIZE MONEY: 1st=20% 2nd=14% 3rd=12% 4th=12% 5th=11% 6th=11% 7th=10% 8th=10%

## \$15,000 Monarch Casino Gambler's Choice Jumper Stake

Entry Fee: \$400

Scratch Fee: \$25 after 1/14 12 p.m.

Post-Entry Fee: \$75 + Entry Fee after entry closing

Height: 1.25m-1.40m (Local Rules)

Class #

199.

Class Description

\$15,000 Monarch Casino Gambler's Choice Jumper Stake

AWARDS: 1st place award, ribbons 1st-10th, 1st-10th and qualifiers requested to ride for ribbons.

PRIZE MONEY: 1st=30% 2nd=23% 3rd=15% 4th=9% 5th=6% 6th=5% 7th=4% 8th=4% 9th=2% 10th=2%

RULES: Each obstacle is allotted an amount of points from 10 to 120 based on difficulty. Obstacles can be jumped in both directions and only twice to count. Competitors are credited with the number of points carried by each obstacle provided it is jumped clear. No points are awarded for an obstacle knocked down. Each competitor is allowed a fixed time of 60 seconds. During this time, he must cross the starting line in either direction and may jump all the obstacles he wishes in any order and in any direction. Sounding the horn declares the end of the round. The competitor must then cross the finish line in any direction for the time to be recorded. The competitor will then be allotted 20 seconds to jump the optional Joker Jump one (1) time for a plus or minus 200 points. The competitor who obtains the greatest number of points will be the winner. In the event of a tie in points, the fastest time taken between the starting line and the finish line will be decided. In the event of a tie in points and time for first place, there will be a jump-off according to the same formula with a fixed time of 40 seconds.

## \$5,000 Top of the Rockies Jumper Stake

Entry Fee: \$300 (\$100 added)

Scratch Fee: \$25

Post Entry Fee: \$25

Height: 1.45m

Class #

219.

Class Description

Top of the Rockies Jumper Stake (Table II, Sec. 2 (a))

AWARDS: 1st place award, ribbons 1st-10th, 1st-10th requested to ride for ribbons.

PRIZE MONEY: 1st=30% 2nd=23% 3rd=15% 4th=9% 5th=6% 6th=5% 7th=4% 8th=4% 9th=2% 10th=2%

## \$40,000 NWSS Grand Prix presented by Monarch Casino

Nominating Fee: \$175 (non-refundable)

Starting Fee: \$475 (\$300 added)

Late Nom Fee: \$350 (after entry closing, non-refundable)

Height: Regional Standard

Class #

251.

Class Description

\$40,000 NWSS Grand Prix presented by Monarch Casino (Table II, Sec. 2 (a))

AWARDS: 1st place award, ribbons 1st-12th, 1st-12th requested to ride for ribbons.

NOMINATION: All horses must be nominated to participate in the Grand Prix and will pay the non-refundable nominating fee of \$175 per horse by the entry closing date (see Rules and Regulations). Late entries will be accepted, with Show Management approval, after the entry closing date and must pay the late, non-refundable nominating fee of \$350 per horse.

DECLARATIONS: Declarations must be made by 12:00 p.m. noon on Sunday, January 16, 2022. Drawing to take place at a designated location and posted by 4:00 p.m. Any declarations made after 12:00 p.m. noon on Sunday, January 16, 2022 will be considered late entries, may be charged additional late charges and will be accepted only by special permission from the Horse Show Manager. Late entries may be placed at the top of the draw if it has been completed.

SCHOOLING: Horses entered in the Grand Prix will have a preferred schooling time prior to the event. Poling will not be permitted. Please refer to Rules and Regulations. Horses not in compliance will not be permitted to compete.

PRIZE MONEY: 1st = 30% 2nd = 22% 3rd = 13% 4th = 8% 5th = 6% 6th = 5%  
7th = 4% 8th = 3% 9th = 3% 10th = 2% 11th = 2% 12th = 2%



# FOR THE GRAND CHAMPIONS.



Whether slick shearing show groomers or removing hair before a sale, keep it at a gold standard. Pre-show fitting in the barn or last minute before the ring. It's about using your skills to build confidence so they place high. Putting your best foot forward, so you can shape what comes next.

ANDIS.COM



CREATE YOUR WAY.

# HORSEMAN'S CHALLENGE

NATIONAL WESTERN STOCK SHOW



January 18-19, 2022  
CINCH Arena in the Events Center

**PRE-ENTRY REQUIRED. Management reserves the right to cap entries in the Horseman's Challenge. Complete entries with payment received by the entry closing date will be put into a random draw to fill individual entry spots.** Exhibitors must enter the draw on the website between November 6, 2021 and November 20, 2021. Following successful individual draw notification, complete entries and payment must be submitted on the website no later than December 5, 2021. The previous year's Speed Challenge winner will receive one entry slot should they have an entry. Teams may be composed of entries successful in the individual draw and entered up until 5:00 p.m. on Tuesday, January 18, 2022.

**ARRIVAL:** To be scheduled and will not begin prior to January 17, 2022 4:00 p.m.

**DEPARTURE:** Immediately after final class, to be vacated no later than January 19, 2022 4:00 p.m.

**All exhibitors in the 2022 Horse Show will be asked to fill out a digital Horse Event Participation Declaration upon animal arrival.**

The National Western Horseman's Challenge provides a challenging, educational and entertaining opportunity for local and national equestrians to be involved in the NWSS within a growing and evolving discipline. Horse and rider teams will face obstacles and maneuvers testing their horsemanship and confidence in each other. Obstacles and maneuvers will vary to accommodate all levels and ages of riders and horses. The National Western Horseman's Challenge is open to all ages of horse and rider and any breed of horse, pony, mule or donkey. Safety will be emphasized at all times. Individual and Team courses will be available upon arrival; the Speed Challenge course will be available after Individual Rounds conclude and the qualifying list posted.

National Western is pleased to announce the addition of an invitational Collegiate Challenge, created to engage local college equestrian programs and offer additional scholarship opportunities. Five Colorado high education programs will each select two representatives to compete. Collegiate competitors will compete in the Individual Rounds and are encouraged to join or create a team for the Team Challenge. The Collegiate Speed Challenge will run concurrently with the Speed Challenge and be awarded separately. The Champion and Reserve Champion in the Collegiate Speed Challenge will receive \$2,000 and \$1,000 scholarships, respectively, provided by the National Western Scholarship Trust.

Prior to submitting entries, read the Rules and Regulations beginning on page 11 of this Premium List concerning rules, health requirements and other information.

## ALL FEES PAYABLE IN U.S. FUNDS ONLY

Draw Fee (non-refundable, due at draw entry) .....	\$5.00
Exhibitor Fee (incl office fee, entry fee, stall fee, exhibitor badge): .....	\$135.00
Collegiate Exhibitor Fee (inclu office fee, entry fee, stall fee, exh badge).....	\$135.00
Team Challenge (per team):.....	\$40.00
Speed Challenge (once qualified): .....	\$20.00
Tack Stall Fee per stall:.....	\$45.00
Vehicle Parking Pass.....	No charge
Trailer Parking Pass.....	\$20.00
Additional Exhibitor Badges (daily grounds admission): .....	\$35.00
(See Rules and Regulations for explanation of Badges)	

**AWARDS:** 1st place awards will be awarded for each division in the Individual Rounds, the Team Challenge, the Collegiate Speed Challenge and the Speed Challenge. The Champion and Reserve Champion of the Collegiate Challenge will receive an award, \$2,000 and \$1,000 scholarships, respectively, and a coach's award. Winners will be asked to ride for awards and photos.

**BIOGRAPHIES:** Will be requested to enhance the entertainment of the event.

**CLASSES:**

252. Individual Rounds - Individual runs to test you and your horse's ability on various obstacles and maneuvers. Scores will incorporate horsemanship, ability and time.

253. Team Challenge - Use your strategy to put together a team of four horse and rider pairs who can successfully accomplish various obstacles and maneuvers quickly. One horse and rider pair on an obstacle at a time, each obstacle must be completed no more and no less than once, each horse and rider pair must complete a minimum of two obstacles or maneuvers. Scores will incorporate horsemanship, ability and time.

254. Speed Challenge - The ultimate finale of fun, fast and exciting individual runs highlighting the most challenging obstacles. A limited number of entries will qualify based on scores from the Individual Rounds. Scores will incorporate horsemanship, ability and time. The qualifiers will have ONE HOUR once the qualifying list has been posted to confirm their participation with payment in the Horse Show Office. If someone is unable to ride in the Speed Challenge, the next highest score will be invited to compete.

255. Collegiate Speed Challenge - Ten representatives from five Colorado college equine programs will face off in a challenging speed round, competing for scholarships. Scores will incorporate horsemanship, ability and time.

**DRAW:** The Horseman's Challenge will consist of 50 horse and rider pairs plus 10 invited collegiate horse and rider pairs. All entries into the draw will be due by the draw closing deadline. There is no limit to how many entries a rider can submit to the draw. One entry consists of one horse and rider pair. Every entry (non-collegiate) submitted to the draw will pay a non-refundable \$5 draw fee. One entry spot will be designated for the previous year's Speed Challenge winner should they have an entry to submit. All owners will have one entry submitted to the initial draw. If there are remaining spots, the owners with multiple entries submitted will be added to the draw to fill the final spots plus an alternate list. Successful entries will be notified and complete entries with payment will be due by the entry closing deadline.

**LEVELING:** To determine winners and divisions, scores will be on a scale. All entries will ride two separate courses in the Individual Rounds. Scores will be added for a final score which will determine the division as shown. The top five finishers in each division will qualify for the Speed Challenge. The top ten finishers overall, not including collegiate competitors, will qualify for the Speed Challenge.

Advanced: 1st-20th scores      Intermediate: 21st-40th scores      Beginner: 41st-60th scores

**OBSTACLES & MANEUVERS:** Potential obstacles and maneuvers will be listed on the NWSS website and will include, but not be limited to: back, walk over/under/through, jump, gate, side pass, lead, any gait or maneuver, carry, move, drag, ground tie, rope, props and more.

**PARKING:** Vehicle parking is included with your exhibitor entry or ticket purchase. Lot H is reserved for exhibitors with a parking pass. There are a limited amount of passes per division. Passes can be requested on your horse entry at a limit of one per horse. Upon move in, additional passes can be picked up from the Horse Show Office on a first come, first served basis. Exhibitors may park in any NWSS designated lot (including the Coliseum parking lot) free of charge.

**PRIZE MONEY:** 100% of the entry fees in the Speed Challenge, plus \$200 matched from NWSS, will be paid out to the top four as follows: 1st = 40%      2nd = 30%      3rd = 20%      4th = 10%  
The top four earning money will need to submit a W9 to receive premium money.

The Collegiate Speed Challenge will award scholarship money from the National Western Scholarship Trust as follows:

Champion = \$2,000 scholarship      Reserve Champion = \$1,000 scholarship

**RIDERS MEETING:** There will be a required riders meeting at 7:30 a.m. at the in gate each morning.

**RULES** (in addition to Rules & Regulations beginning on page 11 of this Premium List):

1. Safety is of the utmost importance; please ride within your and your horse's capabilities.
2. All humane tack will be considered legal if used properly and safely. Nosebands are allowed, but not below the bit. Riders may use two hands.
3. Attire should be western style with long pants or jeans, long sleeved shirt, riding boots with a heel and a western style hat or certified riding helmet.
4. A horse may be ridden only one time in each class and on each course.

5. Riders may compete on multiple horses in the Individual Rounds and are subject to the success of the draw. Each horse will have a separate entry and entry fee.

6. Draws for orders of go will be done via random computer assignment and posted at least one hour prior to each round start time.

7. There will be a required riders' meeting held each morning at 7:30 a.m. at the in gate. Riders will be allowed to walk the Individual and Team courses on foot prior to the start of competition.

8. Courses must be maneuvered in a manner described on the pattern, if specified. Rider must follow the pattern, completing obstacles in order. If an obstacle becomes unsafe or non-negotiable, it will be repaired or removed.

9. Each course will have a maximum time allowed which will be identified for each course. A whistle or buzzer will sound to signal the end of the time allowed. If a rider has not yet completed the course, they must stop and exit when the whistle sounds and they will be considered off pattern. That rider may not place above others who have completed all obstacles in the course in the allowed time.

10. Rider must attempt each obstacle. Riders have three attempts or 30 seconds (whichever comes first) to complete an obstacle before it is deemed a refusal and they must move on in the course. Each refusal will be assessed a 30-second penalty. The third refusal on the course will be considered off pattern and the rider must stop and exit as their round is complete. They may not place above others who have completed all obstacles in the course. The judge may ask a rider to pass on an obstacle at any time for safety reasons. Following a refusal, the rider may continue the course until the maximum time has been reached or they reach three refusals total.

11. There will be penalties assessed as time faults, adding 30 seconds to the rider's time for each instance:

a. 30-second penalties include: incorrect lead, incorrect gait or break of gait, dropping a carry item, horse's foot stepping incorrectly on or off an obstacle as it is described in the pattern, eating, disrupting or damaging an obstacle, not latching gate closed, each refusal up to three

12. Horsemanship, ability and talent will account for one half of the score while speed will account for the other half. Tie breakers for all divisions will be determined by the fastest time.

a. The highest score possible in the Individual Rounds will be 120 points. Eleven obstacles or maneuvers will be scored on a scale from 0-5 points with 5 being the highest. An additional score for overall horsemanship will receive 0-5 points. The eleven obstacles or maneuvers plus the horsemanship score will total a maximum of 60 points. The times for each run, including all penalties, will be ranked to assign points. The fastest time will be awarded 60 points, the next fastest 59 and so on. Riders who are off pattern will receive a 0 for their time score but will still receive a horsemanship score.

b. The highest score possible in the Speed Challenge and Collegiate Speed Challenge is 120 points. Eleven obstacles or maneuvers will be scored on a scale from 0-5 points with 5 being the highest. An additional score for overall horsemanship will receive 0-5 points. The eleven obstacles or maneuvers plus the horsemanship score will total a maximum of 60 points. The times for each run, including all penalties, will be ranked to assign points. The fastest time will be awarded 10 points, the next fastest 9 and so on. Time points will then be multiplied by a factor of six (6) resulting in the fastest time receiving 60 points, the next fastest 54 and so on. Riders who are off pattern will receive a 0 for their time score but will still receive a horsemanship score.

13. The top ten finishers overall in the Individual Rounds (non-collegiate) will qualify for the Speed Challenge. Those ten individuals will have ONE HOUR after the qualifying list has been posted to confirm their participation with payment in the Horse Show Office. If someone is unable to ride in the Speed Challenge or misses their time deadline, the next highest score will be invited to compete. The same horse and rider pair who qualified must compete in the Speed Challenge.

14. The ten invited collegiate competitors will compete in the Collegiate Speed Challenge, run concurrently with the Speed Challenge, and be awarded separately.

TRAILER PARKING: Trailers will be directed to the appropriate trailer parking lot. Passes may be purchased on your entry or at the gate.

# HUTCHISON *HW* BRAND

The most respected name in farm and ranch products, Hutchison Western manufactures and distributes livestock and equine equipment, farm hardware, fencing, wire products and building products.

Our products are available at your local farm and ranch supply store or you can visit us at [hutchison-inc.com](http://hutchison-inc.com).

**Quality  
Durability  
Value**



Gates | Feeders | Fencing Materials | Horse Stalls | Stock Tanks | Entry Gates | Corral Panels

Available at Your Local Farm & Ranch Supply Store. 800-525-0121 • [hutchison-inc.com](http://hutchison-inc.com)





**CHOICE  
OF THE  
PROS.**



**RODEO EQUIPMENT**



**LIVESTOCK SYSTEMS**



**EQUINE SOLUTIONS**



**W-W PAUL SCALES**



**BOARBUSTER™**

**FOR EVERYTHING FROM  
RANCH TO RODEO.**

**VISIT OUR BOOTH!**



**800-999-1214**  
**[www.wwmanufacturing.com](http://www.wwmanufacturing.com)**





# MULE & DONKEY DIVISION

NASMDA Approved

January 20-23, 2022  
CINCH Arena in the Events Center

**PRE-ENTRY REQUIRED.** All entries must be submitted online through the website. Entries will tentatively open November 1, 2021 and close November 30, 2021. **Management reserves the right to cap entries in the NASMDA Division. Complete entries with payment received by the entry closing date will be processed by timestamp with priority given to entries in ticketed performances to ensure high quality events.**

**ARRIVAL:** To be scheduled and will not begin prior to January 19, 2022 10:00 a.m.  
**DEPARTURE:** Immediately after final class, to be vacated no later than January 24, 2022 12:00 p.m.

**All exhibitors in the 2022 Horse Show will be asked to fill out a digital Horse Event Participation Declaration upon animal arrival.**

Judge: Michael Adams, Rochester, IL

Prior to submitting entries, read the Rules and Regulations beginning on page 11 of this Premium List concerning rules, health requirements and other information.

## ALL FEES PAYABLE IN U.S. FUNDS ONLY

Exhibitor Fee/ind back # (incl office fee, stall fee, NASMDA fee, exh badge) ....	\$120.00
Exhibitor Fee/team back # (incl ofc, 2 stalls, 2 NASMDA fees, exh badge) .....	\$182.00
Exhibitor Fee/team if at least one animal is already entered individually .....	\$25.00
Entry Fee (per class, per entry): .....	\$25.00
Feed Team Race Draw Processing Fee per entry (non refundable): .....	\$25.00
Tack Stall Fee per stall.....	\$60.00
Vehicle Parking Pass (request on entry form): .....	No charge
Trailer Parking Pass: .....	\$50.00
Additional Exhibitor Badges (daily grounds admission): .....	\$35.00
(See Rules and Regulations for explanation of Badges)	

**NASMDA:** This is an approved show held under the registration requirements and show rules of the North American Saddle Mule & Donkey Association (NASMDA). Rules will be in accordance with the current NASMDA Rule Book. No miniature donkeys or zebra hybrids (zorse, zedonk, etc.) may be shown in any NASMDA approved event. Exhibitors wishing to participate in Amateur classes must have a current NASMDA Amateur Card at time of entry with no exceptions. All junior mules competing in junior mule classes will be required to submit a mouthing certificate or registration papers proving age at time of entry.

**PARKING:** Vehicle parking is included with your exhibitor entry or ticket purchase. Lot H is reserved for exhibitors with a parking pass. There are a limited amount of passes per division. Passes can be requested on your horse entry at a limit of one per horse. Upon move in, additional passes can be picked up from the Horse Show Office on a first come, first served basis. Exhibitors may park in any NWSS designated lot (including the Coliseum parking lot) free of charge.

**TRAILER PARKING:** Trailers will be directed to the appropriate trailer parking lot. Passes may be purchased on your entry or at the gate.

For safety reasons **NO FARM IMPLEMENTS** will be allowed in any Costume or Parade class. All vehicles used should be safe and sound for driving in a public setting.

Written descriptions for Costume and Parade classes are limited to one (1) short typed paragraph (5 sentences). Parade Hitch descriptions are due in the Horse Show Office by 10:00 a.m. Friday, January 21, 2022 and Costume descriptions are due in the Horse Show Office by 5:00 p.m. Saturday, January 22, 2022. Descriptions received after the deadlines will not be read.

**HALTER AND SHOWMANSHIP**

- 278. Three & Younger Saddle Mules Molly
- 279. Three & Younger Saddle Mules John
- 280. Four Old & Older Saddle Mules Molly
- 281. Four Old & Older Saddle Mules John
- 282. Draft Mules All Ages
- Grand & Reserve Champion Mule
- 283. Youth Mule Showmanship 13 & Under
- 284. Youth Mule Showmanship 14-18
- 285. Amateur Mule Showmanship
- 286. Jennets & Geldings (48.01" & over\*)
- 287. Jacks (48.01" & over\*)
- Grand & Reserve Champion Donkey
- 288. Open Donkey Showmanship All Ages

**ENGLISH**

- 303. Junior Mule Hunter Hack
- 304. Senior Mule Hunter Hack
- 291. Open Donkey Hunter Under Saddle
- 293. Youth Mule Hunter Under Saddle
- 296. Amateur Mule Hunter Under Saddle
- 297. Junior Mule Hunter Under Saddle
- 298. Senior Mule Hunter Under Saddle

**DRIVING**

- 294. Open Mule Pleasure Driving Hitch
- 308. Open Mule Obstacle Driving Single  
(See page 58 for meeting time)
- 309. Open Mule Obstacle Driving Team  
(See page 58 for meeting time)
- 329. Open Mule Pleasure Driving Single
- 332. Open Donkey Pleasure Driving Single
- 330. Youth Mule Pleasure Driving Single
- 333. Open Mule Drive & Ride

**TRAIL**

- 256. Open Donkey Trail
- 257. Senior Mule Trail
- 258. Junior Mule Trail
- 259. Amateur Mule Trail
- 260. Youth Mule Trail

**WESTERN**

- 321. Sr Mule Western Pleasure
- 327. Open Donkey Western Pleasure
- 318. Youth Mule Western Pleasure
- 336. Jr Mule Western Pleasure
- 324. Amateur Mule Western Pleasure
- 261. Junior Mule Ranch Riding
- 262. Senior Mule Ranch Riding

**GYMKHANA**

- 301. Open Donkey Barrel Race
- 305. Open Mule Flag Race
- 302. Youth Mule Barrel Race
- 311. Open Mule Keyhole Race
- 312. Open Mule Pole Bending
- 315. Open Mule Barrel Race

**SPECIALTY**

- 289. Draft/Mule Team Log Skid Race  
(See page 58 for rules)
- 328. Open Mule/Donkey Costume
- 300. Open Mule Parade Hitch
- 334. Draft/Mule Feed Team Race  
(See page 57 for rules)

**MEASURING:** NASMDA requires donkeys to meet minimum measurement requirements to participate in NASMDA sanctioned events. All Jacks and Jennets must be at least 48.01". Show staff will supply a height chart to be available to exhibitors beginning on Thursday, January 20, 2022 at 12:00 p.m. noon in the Horse Show Office.

**AWARDS AND PRIZE MONEY:**

1st Place award, ribbons 1st-6th, high point awards. Youth and Amateur high point awards based on one (1) mule or donkey/one (1) rider combination.

	1st	2nd	3rd	4th	5th	6th
Halter & Showmanship Classes	\$55	\$45	\$35	\$25	\$15	
Grand & Reserve Champion Halter	RIB	RIB				
Performance Classes	\$100	\$75	\$60	\$50	\$40	\$30
Feed Team Race & Team Log Skid	See page 57-58 for details					

High Point Open Mule (qualifying classes: 257, 258, 261, 262, 278, 279, 280, 281, 294, 297, 298, 303, 304, 305, 308, 311, 312, 315, 321, 328, 329, 333, 336)

High Point Youth Mule (qualifying classes: 260, 283, 284, 293, 302, 318, 330)

High Point Amateur Mule (qualifying classes: 259, 285, 296, 324)

High Point Donkey (qualifying classes: 256, 286, 287, 288, 291, 301, 327, 332)

High Points will be awarded in accordance with the most current NASMDA Rulebook guidelines. 1st place will receive one (1) point for every entry shown in the class, not to exceed six points, 2nd place will receive five points, etc. If only three entries are shown, 1st place will receive three points, 2nd place will receive two points, etc. No points will be awarded for a disqualified entry. Mule/donkey and/or mule/rider combination with the most points will be declared the winner. In the event of a tie, the tie will be broken in accordance with the most current NASMDA Rulebook.

**Mule Trail Challenge Award:** To be awarded to the highest scoring mule in trail classes.

# KEEP YOUR HORSE *SAFE!*

Your horse's health and well being are of the utmost importance and the National Western Stock Show is committed to animal health and safety year round. We employ several preventative measures as part of our biosecurity plan and encourage horse owners to join us in minimizing the risks.

## What we do:

- Use Synbiont® year round
- Post tips in the horse barns
- Provide hand sanitizer in the horse barns
- Clear manure dump areas daily
- Provide proper receptacles for various kinds of disposal

## What you can do:

- DO NOT use common water buckets
- Park trailers and vehicles away from barn areas
- DO NOT have dogs at events
- Wash your hands before AND after touching animals
- DO NOT leave hoses on ground
- Use hand sanitizer often
- DO NOT let hoses touch or drop into water buckets
- Use proper disposal receptacles and areas

View the NWC Biosecurity Plan:

[www.NationalWestern.com/Horse-Shows/Horse-Exhibitors](http://www.NationalWestern.com/Horse-Shows/Horse-Exhibitors)



**NATIONAL WESTERN STOCK SHOW**  
**FREE HEALTH SCREENINGS**  
**EXÁMENES DE SALUD GRATUITOS**



**Includes:**

**Blood pressure**

**BMI (Body Mass Index)**

**Blood Sugar**

**Vision**

**Oral Health**

**Balance Screening**

**Flu Shots**

(subject to availability )

**Incluye:**

**Presión sanguínea**

**IMC (Índice de Masa Corporal)**

**Azúcar en la sangre**

**Visión**

**Salud bucal**

**Examen de equilibrio**

**Vacunas contra la gripe**

(Sujetas a disponibilidad)

**EXPO Hall Booth # 217**

**HERE ALL DAY, EVERY DAY**

**AQUÍ TODO EL DÍA, TODOS LOS DÍAS**

**Vision:** We envision every person in Colorado having the opportunity to attain their full health potential.

**Nuestra visión es:** Que cada persona en Colorado tenga la oportunidad de alcanzar su máximo potencial de salud.



University of Colorado  
Anschutz Medical Campus

[www.cuanschutz.edu/centers/coahec](http://www.cuanschutz.edu/centers/coahec)

\*This publication is supported by the Health Resources and Services Administration (HRSA) of the U.S. Department of Health and Human Services (HHS) as part of a financial assistance award totaling \$1,778,820 with 50 percent funded by HRSA/HHS and \$889,410 and 50 percent funded by non-government source(s). The contents are those of the author(s) and do not necessarily represent the official views of, nor an endorsement, by HRSA/HHS, or the U.S. Government.\*



# DRAFT HORSE DIVISION

## HALTER & PERFORMANCE

The National Western Stock Show Draft Horse Show aims to preserve and promote the integrity of the heavy horse breeds.

North American Six-Horse Hitch Classic Series, Classic Cart Series & Youth Cart Series Member

January 20-23, 2022

CINCH Arena in the Events Center

**PRE-ENTRY REQUIRED.** All entries must be submitted online through the website. Entries will tentatively open November 1, 2021 and close November 30, 2021. **Management reserves the right to cap entries in the Draft Horse Division. Complete entries with payment received by the entry closing date will be processed by timestamp with priority given to entries in ticketed performances to ensure high quality events.**

**ARRIVAL:** To be scheduled and will not begin prior to January 19, 2022 10:00 a.m.

**DEPARTURE:** Immediately after final class, to be vacated no later than January 24, 2022 12:00 p.m.

**All exhibitors in the 2022 Horse Show will be asked to fill out a digital Horse Event Participation Declaration upon animal arrival.**

Judges: Joe Biren, Iona, MN

Andrew Stalheim, Amery, WI

Prior to submitting entries, read the Rules and Regulations beginning on page 11 of this Premium List concerning rules, health requirements and other information.

### ALL FEES PAYABLE IN U.S. FUNDS ONLY

Exhibitor Fee/back # if no pkg (incl office fee, stall fee, exh badge).....	\$115.00
Halter/Showmanship Class Entry Fee:.....	\$20.00
Working Team Class Entry Fee:.....	\$25.00
Cart, Team, Unicorn and 4-Horse Hitch Class Entry Fee: .....	\$25.00
6-Horse & 8-Horse Hitch Class Entry Fee:.....	\$50.00
Feed Team Race Draw Processing Fee per entry (non refundable): .....	\$25.00
Tack Stall Fee per stall:.....	\$60.00
NASHHCS Non Member Fee:.....	\$25.00
Vehicle Parking Pass (request on entry form): .....	No charge
Trailer Parking Pass: .....	\$50.00
Additional Exhibitor Badges (daily grounds admission): .....	\$35.00
(See Rules and Regulations for explanation of Badges)	

Special Draft Horse Package pricing is available, see entry form. A minimum of six horses must be entered to select Package A. A minimum of four horses must be entered to select Package B. Classes must be listed on entry form to be included in Package pricing. Classes entered after the entry deadline will be additional and not included in package pricing.

**PARKING:** Vehicle parking is included with your exhibitor entry or ticket purchase. Lot H is reserved for exhibitors with a parking pass. There is a limited amount of passes per division. Passes can be requested on your horse entry at a limit of one per horse. Upon move in, additional passes can be picked up from the Horse Show Office on a first come, first served basis. Exhibitors may park in any NWSS designated lot (including the Coliseum parking lot) free of charge.

**TRAILER PARKING:** Trailers will be directed to the appropriate trailer parking lot. Passes may be purchased on your entry or at the gate. **No electrical hookups are available.**

A Show Fee of \$115.00 will be charged for each back number issued. All halter horses must be issued a separate back number. All group/hitch/teams will be issued one (1) back number. If owner has more than one (1) team competing, second team will be issued a separate number.

Complete all information on entry form including hitch, class numbers and driver name. Mare and stallion halter entries must include a registration number.

#### AWARDS:

Halter & showmanship classes: 1st place award, ribbons 1st-6th, Grand Champion awards.  
Performance classes: 1st place award, ribbons 1st-6th, ribbons 1st-10th in 6-horse and 8-horse classes.

#### HALTER CLASS RULES:

1. Halter Classes - Horses shown in classes 267-273 must be registered. Registration number must be shown after the name of each horse on yellow entry form.
2. Geldings shown in classes 274-275 may be of any breed and need not be registered.
3. This is a Class C "All American" show for Belgian, Percheron and Clydesdale horses.
4. Belgian horses' placings qualify for the Belgian Merit Program.

#### STALLIONS (All breeds competing)

267. Draft Yearling Stallions
268. Draft Two Year Old Stallions
269. Draft Three Year Old Stallions  
Grand & Reserve Champion Draft Stallion

#### MARES (All breeds competing)

270. Draft Yearling Mares
271. Draft Two Year Old Mares
272. Draft Three Year Old Mares
273. Draft Four Years & Older Mares  
Grand & Reserve Champion Draft Mare

#### GELDINGS (All breeds competing)

274. Draft Three Years & Younger Geldings
275. Draft Four Years & Older Geldings  
Grand & Reserve Champion Draft Gelding  
Champion of Champions Draft Horse

#### PRIZE MONEY distribution for halter classes

Regular Classes	1st=\$100	2nd=\$75	3rd=\$55	4th=\$40
Grand Champion in each division to receive:	\$100			
Reserve Champion in each division to receive:	\$80			
Champion of Champions:	\$200			

#### YOUTH SHOWMANSHIP (open to all breeds)

276. Draft Youth Showmanship 12-14
277. Draft Youth Showmanship 15-18  
Ribbons: 1st -6th place

#### RULES (in addition to Rules & Regulations beginning on page 11 of this Premium List):

1. The NWSS Draft Horse Show is open to draft horses descended from traditional heavy horse breeds including Belgian, Percheron, Clydesdale, Shire or Suffolk. Show Management reserves the right to review and appraise all entries and reject entries or exhibits not sufficiently fitted to be a credit to the breed represented. Should a question arise concerning the breeding of a horse, the burden of proof falls on the exhibitor and the Show Management decision is final as to what qualifies as a draft horse.
2. This show is a member of the the North American Six-Horse Hitch Classic Series and North American Cart Classic Series. Entries in classes 306, 313 and 320 must possess a current Six-Horse or Cart membership. These classes will be run in accordance with NASHHCS rules.
3. Show Management reserves the right to combine, split or cancel classes at its discretion. Show Management reserves the right to have classes judged in heats with call back privileges.
4. If it shall be ascertained that any exhibitors or helpers are attempting to interfere with the Judge or Show Management in the performance of their duties in any manner or if any exhibitor refuses to accept the awards made, they shall be disqualified from further competition and shall forfeit any premiums and awards awarded to them.
5. No person shall be permitted in the ring during the time of judging, except the judges, clerks, arena director, official photographers and one (1) groom with each exhibit. Grooms should be attired in keeping with their exhibit.
6. For safety reasons, an additional capable driver should be on the seat with the driver in classes with three or more horses on the hitch.
7. Minimum age for show exhibitors shall be twelve (12) years. Date of birth is required on the entry form.



8. Animals shall be shown with an appropriate wagon or cart, depending on the class entered. Farm implements are not allowed in any draft horse class.
9. Hitches may be made up of horses owned by one (1) or more exhibitors.
10. Hitches are judged on performance, driving and conformation as noted in individual class descriptions:
  - A. Performance: The animal's way of going; their manner of prompt, springy action; the individual and collective responses of the animals to the drivers verbal and manual signals; the overall performance of the animals.
  - B. Driving: Ability of driver; the ease with which they put the animals through their paces and their response. The working relationship between the driver and animals.
  - C. Conformation: The overall appearance of the hitch; matching of the animals in size, color and markings. Animals should be compact and stylish, standing squarely, being well muscled with clean bones and joints.
11. Horses must be used by only one exhibitor in each class. Each team, horse, handler and/or driver can compete only once in each class.
12. The following rules apply to the specific class listed:
  - A. Mens and Ladies Single Cart (one (1) horse)
    1. The same horse cannot be used in both classes.
    2. Class to be judged on driving, performance and conformation.
  - B. Mare & Gelding Single Cart (one (1) horse)
    1. Driver may be female or male.
    2. Class to be judged on driving, performance and conformation.
  - C. Classic Cart
    1. Must submit North American Cart Classic Series member number with entry form.
    2. Any horse/driver from said membership number is eligible to compete.
    3. ONLY one (1) entry per membership number
  - D. Junior Single Cart (one (1) horse)
    1. Stallions prohibited.
    2. Driver may not enter Ladies or Mens cart classes, but may enter the junior driving class.
    3. Driver must be competent and 12 to 18 years of age, inclusive.
    4. Classes will be offered for 12-14 years of age and 15-18 years of age.
    5. Class is judged on driving and performance.
    6. Horses from Ladies or Mens Cart classes may be used.
    7. One (1) adult (experienced) driver must accompany the junior driver.
  - E. Junior Team Driving
    1. Two horse team; horses from other classes may be used.
    2. Driver must be competent and 12 to 18 years of age, inclusive.
    3. Classes will be offered for 12-14 years of age and 15-18 years of age.
    4. Class is judged on driving and performance.
    5. One (1) adult (experienced) driver must accompany junior driver.
    6. Driver may enter this class and junior cart class only.
  - F. Youth Showmanship
    1. Patterns will be available upon move in.
  - G. Amateur Team
    1. Two horse team using any wagon and clean harness. Farm implements are not allowed.
    2. Class to be judged on driving and performance.
    3. Driver may not participate in any other Team, Unicorn, 4-Horse, 6-Horse or 8-Horse classes.
  - H. Working Team
    1. NO FARM IMPLEMENTS for safety reasons. All vehicles used should be safe and sound for driving in a public setting. Any two or four wheel work related vehicle.
    2. This class is not open to forecarts or show hitch wagons.
    3. Class is to be judged 40% on how well matched and dressed the team is, 40% on how well the driver handles the team and the driver's attire and 20% on the presentation of the vehicle or implement.
  - I. Draft/Mule Feed Team Race
    1. Open to Draft Horse teams and Draft Mule teams.
    2. One (1) entry per team w/designated driver and handler. Drivers and handlers may not compete on another team. Driver & handler names must be included on entry form.
    3. Course must be negotiated at walk or trot. A penalty will be given for a canter or gallop.
    4. If two teams have the same time including penalties, their payback will be

- the sum of their placings divided by two.
5. Fastest times from Sections A, B & C will be asked to return for the final.
  6. The order of go for each section will be randomly drawn and posted at the Horse Show Office & the Paddock.
  7. Course and rules will be available in the Horse Show Office upon move in.
  8. A meeting for all exhibitors will be held on Friday, January 21, 2022 at 6:30 p.m. at the Events Center Show Arena in-gate to explain the course, rules and procedures.
  9. Each section will pay: 1st=\$140 2nd=\$110 3rd=\$90 4th=\$80 5th=\$70 6th=\$50. Final will Pay: 1st=\$100 2nd=\$70 3rd=\$50.
  10. The National Western prides itself on being the world's premier center for America's western heritage and events are planned with the intention of upholding and aligning with the quality, competition and entertainment of the National Western. The Draft/Mule Feed Team Race will consist of 24 teams who will all compete in a heat style format in order to qualify for the final. The top six times will advance to the final and run a fresh run.
  11. All entries for the Draft/Mule Feed Team Race will be due by the entry closing deadline. There is no limit to how many teams an owner can submit. Every team submitted will pay a non-refundable \$25 processing fee. One spot will be designated for the previous year's winner should they have a team to enter. All owners will have one entry submitted into an initial draw. If there are remaining spots, the owners with multiple teams will be added to the draw to fill the final spots and an alternate list. Class entry fees will be processed following the draw for those selected.
- J. Obstacle Driving (Hitch)
1. Open to Draft Horse teams.
  2. One (1) entry per team w/designated driver. Drivers may not compete on another team. Driver name must be included on entry form.
  3. If two teams have the same time including penalties their payback will be the sum of the placings divided by two.
  4. Course will be completed at a walk or trot. A penalty will be given for a canter or gallop.
  5. The order of go will be randomly drawn and posted at the Horse Show Office & the Paddock.
  6. Course and rules will be available in the Horse Show Office upon move in.
  7. A meeting for all exhibitors will be held on Saturday, January 22, 2022 at 7:45 a.m. at the Events Center Show Arena in-gate to explain the course, rules and procedures.
- K. Draft/Mule Team Log Skid
1. Open to Draft Horse teams and Draft Mule teams.
  2. One (1) entry per team with a designated driver. Driver may not compete on another team. Driver name must be included on entry form.
  3. If two teams have the same time including penalties their payback will be the sum of the placings divided by two.
  4. Course will be completed at a walk or trot. A penalty will be given for a canter or gallop.
  5. The order of go will be randomly drawn and posted at the Horse Show Office & the Paddock.
  6. Course with rules will be available in the Horse Show Office upon move in.
  7. A meeting for all exhibitors will be held Friday, January 21, 2022 at 11:45 a.m. at the Events Center Show Arena in-gate to explain the course, rules and procedures.
  8. Final placings will pay: 1st=\$140 2nd=\$120 3rd=\$110 4th=\$110 5th=\$100 6th=\$90 7th=\$80 8th=\$70 9th=\$60 10th=60.
- L. Hitch Stipend
1. \$300 per hitch will be awarded to entrants in the 6-horse and 8-horse hitch classes only who did not place in the top 10 in any of the three classes.
- M. Mileage
1. Open 6-horse or 8-horse hitch classes will receive a mileage stipend. Mileage will be calculated from owner's address listed on the entry form to the National Western Complex.
    - a. \$100 if 150 miles or less from Denver.
    - b. \$400 if 151 miles through 600 miles from Denver.
    - c. \$750 if 601 miles or more from Denver.

PERFORMANCE CLASSES PAY AS FOLLOWS:

335. 8-Horse Hitch	1st=\$2000 6th=\$1000	2nd=\$1400 7th=\$1000	3rd=\$1200 8th=\$1000	4th=\$1000 9th=\$1000	5th=\$1000 10th=\$1000
306. Classic 6-Horse Hitch	1st=\$2000 6th=\$900	2nd=\$1600 7th=\$800	3rd=\$1200 8th=\$600	4th=\$1000 9th=\$500	5th=\$900 10th=\$500
320. Classic 6-Horse Hitch	1st=\$2000 6th=\$900	2nd=\$1600 7th=\$800	3rd=\$1200 8th=\$600	4th=\$1000 9th=\$500	5th=\$900 10th=\$500
265. 4-Horse Gelding Hitch	1st=\$700 6th=\$350	2nd=\$500 7th=\$350	3rd=\$450 8th=\$300	4th=\$400 9th=\$300	5th=\$350 10th=\$300
292. Gelding Unicorn Hitch	1st=\$500 6th=\$200	2nd=\$350 7th=\$200	3rd=\$300 8th=\$200	4th=\$250 9th=\$200	5th=\$250 10th=\$200
299. 4-Horse Mare Hitch	1st=\$700 6th=\$350	2nd=\$500 7th=\$350	3rd=\$450 8th=\$300	4th=\$400 9th=\$300	5th=\$350 10th=\$300
266. Mare Unicorn Hitch	1st=\$500 6th=\$200	2nd=\$350 7th=\$200	3rd=\$300 8th=\$200	4th=\$250 9th=\$200	5th=\$250 10th=\$200
263. Gelding Team	1st=\$300 6th=\$150	2nd=\$200 7th=\$140	3rd=\$200 8th=\$140	4th=\$180 9th=\$120	5th=\$160 10th=\$120
264. Mare Team	1st=\$300 6th=\$150	2nd=\$200 7th=\$140	3rd=\$200 8th=\$140	4th=\$180 9th=\$120	5th=\$160 10th=\$120
317. Working Team	1st=\$300 6th=\$150	2nd=\$200 7th=\$140	3rd=\$200 8th=\$140	4th=\$180 9th=\$120	5th=\$160 10th=\$120
290. Amateur Team	1st=\$300 6th=\$150	2nd=\$200 7th=\$140	3rd=\$200 8th=\$140	4th=\$180 9th=\$120	5th=\$160 10th=\$120
314. Ladies Team	1st=\$300 6th=\$150	2nd=\$200 7th=\$140	3rd=\$200 8th=\$140	4th=\$180 9th=\$120	5th=\$160 10th=\$120
326. Junior Driving Team 12-14	1st=\$140 6th=\$90	2nd=\$120 7th=\$80	3rd=\$110 8th=\$70	4th=\$110 9th=\$60	5th=\$100 10th=\$60
331. Junior Driving Team 15-18	1st=\$140 6th=\$90	2nd=\$120 7th=\$80	3rd=\$110 8th=\$70	4th=\$110 9th=\$60	5th=\$100 10th=\$60
325. Mens Cart	1st=\$180 6th=\$100	2nd=\$150 7th=\$100	3rd=\$130 8th=\$90	4th=\$120 9th=\$90	5th=\$110 10th=\$90
322. Ladies Cart	1st=\$180 6th=\$100	2nd=\$150 7th=\$100	3rd=\$130 8th=\$90	4th=\$120 9th=\$90	5th=\$110 10th=\$90
295. Mare Cart	1st=\$180 6th=\$100	2nd=\$150 7th=\$100	3rd=\$130 8th=\$90	4th=\$120 9th=\$90	5th=\$110 10th=\$90
313. Classic Cart	1st=\$180 6th=\$100	2nd=\$150 7th=\$100	3rd=\$130 8th=\$90	4th=\$120 9th=\$90	5th=\$110 10th=\$90
323. Junior Cart 12-14	1st=\$140 6th=\$90	2nd=\$120 7th=\$80	3rd=\$110 8th=\$70	4th=\$110 9th=\$ 60	5th=\$100 10th=\$60
316. Junior Cart 15-18	1st=\$140 6th=\$90	2nd=\$120 7th=\$80	3rd=\$110 8th=\$70	4th=\$110 9th=\$60	5th=\$100 10th=\$60
310. Draft Obstacle Driving Hitch	1st=\$140 6th=\$90	2nd=\$120 7th=\$80	3rd=\$110 8th=\$70	4th=\$110 9th=\$60	5th=\$100 10th=\$60

289. Draft/Mule Team Log Skid Race - See Rules on page 58 for payback information.

334. Draft/Mule Feed Team Race - See Rules on page 57 for payback information.

# DRAFT HORSE DIVISION

## PULLING CONTEST

January 21-23, 2022  
CINCH Arena in the Events Center

**PRE-ENTRY REQUIRED.** All entries must be submitted online through the website. Entries will tentatively open November 1, 2021 and close November 30, 2021. **Management reserves the right to cap entries in the Draft Horse Division. Complete entries with payment received by the entry closing date will be processed by timestamp with priority given to entries in ticketed performances to ensure high quality events.**

**ARRIVAL:** To be scheduled and will not begin prior to January 20, 2022 12:00 p.m.

**WEIGH-IN:** January 21, 2022 9:00 a.m. to 10:00 a.m. (offsite)

**DEPARTURE:** Immediately after final class, to be vacated no later than January 24, 2022 12:00 p.m.

**All exhibitors in the 2022 Horse Show will be asked to fill out a digital Horse Event Participation Declaration upon animal arrival.**

Prior to submitting entries, read the Rules and Regulations beginning on page 11 of this Premium List concerning rules, health requirements and other information.

### ALL FEES PAYABLE IN U. S. FUNDS ONLY

Exhibitor Fee/team (incl office fee, entry fee, stall fee, drug fee, exh badge)... \$175.00  
Tack Stall Fee per stall:..... \$60.00  
Vehicle Parking Pass:..... No charge  
Trailer Parking Pass: ..... \$50.00  
Additional Exhibitor Badges (daily grounds admission): ..... \$35.00  
(See Rules and Regulations for explanation of Badges)

**RULES** (in addition to Rules & Regulations beginning on page 11 and Draft Horse Division Rules beginning on page 55 of this Premium List):

1. Contest will be run in accordance with the standards and practices of the National Western Stock Show.
2. Contest is open to any team of Draft Horses.
3. All teams entered in this contest will be weighed on a scale certified by the State of Colorado Dept. of Agriculture Weights & Measures, without harness. Officials will weigh each team only one (1) time to determine official pulling weight. Weigh-in will begin promptly at 9:00 a.m., Friday, January 21, 2022 and must be completed by 10:00 a.m. that same day.
4. Horses may pull in one class and one division only.
5. Contest will be run with a sled or stone boat.
6. Teams weighed on January 21, 2022 will be separated into the following classes: Light Weight = 3,400 lbs & under, Middle Weight = 3,401-3,600 lbs, Heavy Weight = 3,601+ lbs. Weight division breaks are subject to change at the discretion of Show Management.
7. Each team is entitled to two attempts on a given load; the longest distance will count. A full pull equals twenty feet (20').
8. No inappropriate conduct or treatment of animals will be tolerated.
9. Substitute horses will not be permitted once teams have weighed in.
10. To promote health, welfare and safety of our equine athletes as well as fairness of competition, random teams will be drug tested immediately following each contest. In the absence of a governing body for the division, collection, testing and analysis will follow current guidelines set forth by national organizations. All results will be reviewed by Management with consideration given to each unique case based on their individual merits. Disciplinary actions will be determined by Show Management as outlined in the NWSS Rules & Regulations.

**AWARDS:** 1st place award, ribbons 1st-10th. The winning exhibitor in the heavy weight pull will receive a gift certificate for a pair of CINCH jeans to help continue their winning style. CINCH believes in the hard work of the NWSS competitors and strives to support that through the Cinch 2 Win program.

# CINCH®

### PRIZE MONEY:

1 <sup>st</sup> - \$2,500	2 <sup>nd</sup> - \$1,600	3 <sup>rd</sup> - \$1,200	4 <sup>th</sup> - \$1,000	5 <sup>th</sup> - \$900
6 <sup>th</sup> - \$800	7 <sup>th</sup> - \$700	8 <sup>th</sup> - \$500	9 <sup>th</sup> - \$400	10 <sup>th</sup> - \$400

# NORTH AMERICAN LIVESTOCK SHOW & RODEO MANAGERS ASSOCIATION



The purpose of NALS&RMA is to promote the common interests of the membership livestock shows and rodeos, to improve the working or business conditions of the member livestock shows and rodeos and to maintain the member livestock shows and rodeos at the highest level of operation.

AKSARBEN STOCK SHOW  
Grand Island, NE

AMARILLO TRI-STATE EXPOSITION  
Amarillo, TX

AMERICAN ROYAL ASSOCIATION  
Kansas City, MO

ARIZONA NATIONAL LIVESTOCK SHOW  
Phoenix, AZ

ARKANSAS STATE FAIR  
Little Rock, AR

BLACK HILLS STOCK SHOW & RODEO/CENTRAL  
STATES FAIR  
Rapid City, SD

CALGARY STAMPEDE  
Calgary, AB, CAN

CALIFORNIA RODEO SALINAS  
Salinas, CA

COLORADO STATE FAIR & RODEO  
Pueblo, CO

DIXIE NATIONAL LIVESTOCK SHOW & RODEO  
Jackson, MS

EASTERN STATES EXPOSITION  
West Springfield, MA

HEART O' TEXAS FAIR & RODEO  
Waco, TX

HOUSTON LIVESTOCK SHOW & RODEO  
Houston, TX

INDIANA STATE FAIR  
Indianapolis, IN

IOWA STATE FAIR  
Des Moines, IA

KANSAS STATE FAIR  
Hutchinson, KS

KEYSTONE INTERNATIONAL LIVESTOCK EXPO  
Harrisburg, PA

MARYLAND STATE FAIR  
Timonium, MD

MINNESOTA STATE FAIR  
St. Paul, MN

NATIONAL WESTERN STOCK SHOW & RODEO  
Denver, CO

NEBRASKA STATE FAIR  
Grand Island, NE

NORTH AMERICAN INTERNATIONAL LIVESTOCK  
EXPO  
Louisville, KY

NORTHERN INTERNATIONAL LIVESTOCK EXPO  
Billings, MT

NORTHLANDS CANADIAN FINALS  
Edmonton, AB, CAN

OKLAHOMA STATE FAIR  
Oklahoma City, OK

OZARK EMPIRE FAIR  
Springfield, MO

RODEO AUSTIN  
Austin, TX

SAN ANGELO STOCK SHOW & RODEO ASSOC.  
San Angelo, TX

SAN ANTONIO LIVESTOCK EXPOSITION  
San Antonio, TX

SOUTHWESTERN EXPO & LIVESTOCK SHOW  
Fort Worth, TX

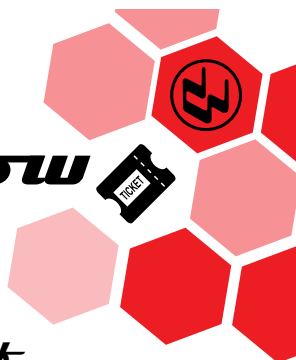
STATE FAIR OF LOUISIANA  
Shreveport, LA

STATE FAIR OF TEXAS  
Dallas, TX

TULSA STATE FAIR  
Tulsa, OK

WYOMING STATE FAIR  
Douglas, WY

# exclusive for *Horse Show* *Exhibitors*



## RODEO TICKETS ~~\$4-\$6 off~~

Jan. 8   3:30 PM	Colorado vs. <sup>CINCH</sup> World Rodeo
Jan. 9   2 PM	Mexican Rodeo Extravaganza <small>presented by Hutchison Western</small>
Jan. 11   7 PM	PBR Bull Riding
Jan. 13   7 PM	Pink Pro Rodeo <small>presented by Cigna</small>
Jan. 17   1 PM	Pro Rodeo
Jan. 17   6 PM	MLK Jr. Heritage Rodeo
Jan. 18   7 PM	Pro Rodeo Military Night
Jan. 19   1:30 PM	Pro Rodeo
Jan. 19   7 PM	Pro Rodeo
Jan 20   7 PM	Pro Rodeo

## FAMILY SHOWS ~~\$4 off~~

Jan 16   4 PM	Wild West Show
Jan 18   6:30 PM	Xtreme Dogs
Jan 20   7 PM	An Evening of Dancing Horses <small>presented by 9NEWS</small>
Jan 21   7 PM	Draft, Mule & Donkey Show

**TICKETS AT:**  
nationalwestern.com/tickets

**PROMO CODE: WAGON**

Prices are not available to the general public. Tickets purchased through this special offer are free of service charge. All orders are subject to availability.

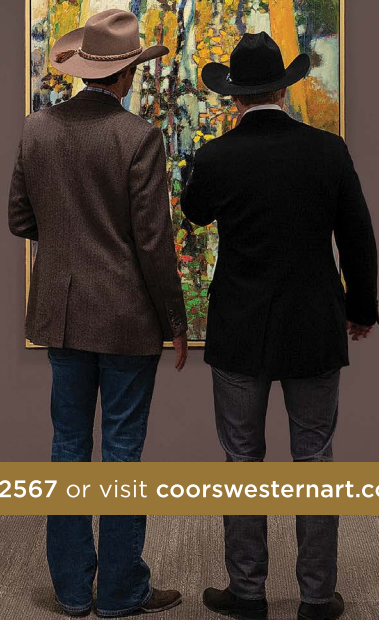
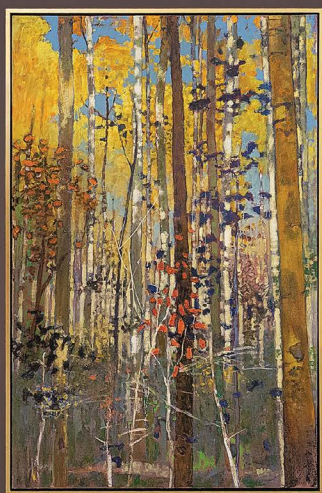


# 2022 COORS WESTERN ART EXHIBIT & SALE

BENEFITING THE NATIONAL WESTERN SCHOLARSHIP TRUST

Visit the Coors Western Art Gallery on the third floor of the expo hall for one of the finest art shows celebrating our western heritage. Net proceeds benefit the National Western Scholarship Trust.

- Gallery open 8-9 Sunday-Thursday, 9-9 Friday-Saturday
- Curator guided tours on Tuesdays and Thursdays
- Scavenger hunt for kids
- Purchase the 2022 poster by featured artist David Griffin
- Past years posters and artist publications also available
- Visit the National Western Club for more great western art



More information, call **303-291-2567** or visit [coorswesternart.com](https://coorswesternart.com)

# NATIONAL WESTERN STOCK SHOW

## Advertisers Index

Andis	45
Cinch	6
Colorado AHEC	54
Colorado State University	35
Coors Western Art Exhibit & Sale	63
Hutchison Western	49
Littleton Equine Medical Center	29
Marriott Hotels Denver	10
National Western Center	22
N. Am. Livestock Show & Rodeo Mgrs Assn.	61
NWSS Equestrian Youth Programs	Inside Front Cover
NWSS Tickets	62
Transwest Cimarron	Inside Back Cover
United States Equestrian Federation	36
WW Livestock Systems	50



# TRANSWEST

## TRUCK TRAILER RV

### *Cimarron* TRAILERS®

*The Official Horse and Livestock Trailer of  
the National Western Stockshow!*



**LOGAN**  
COACH  
TRAILERS

**OUTLAW**  
*Cougar*

**SUMMIT HAULER**

SALES | PARTS | SERVICE

We Also Carry RV's!

**NEWMAR**  
WHERE YOU KNOW THE DIFFERENCE™

**Renegade**

**TIFFIN**  
MOTORHOMES

**THOR**  
MOTORHOMES

**WINNEBAGO**

7550 E. I-25 FRONTAGE RD. FREDERICK, CO 80516  
800-909-7071 • WWW.TRANSWEST.COM



January 8 - 23, 2022

Western Stock Show Association  
dba National Western Stock Show  
4655 Humboldt Street  
Denver, CO 80216-2818

### **Dated Material Enclosed**

The Horse Premium List is published annually by the Western Stock Show Association to share information for horse, agriculture and education.

### **Horse Competition Schedule**

(other events included in this Premium List)

January 8	Youth Ranch Horse Mentor Matchup Invitational Ranch Rodeo
January 9	NRHA \$25,000 RAM Invitational Freestyle Reining
January 10-12	AQHA/APHA Show
January 11-12	NRCHA Show
January 13-17	USEF/USHJA Hunter/Jumper Show
January 18-19	National Western Horseman's Challenge
January 20-23	NASHHCS Draft Horse Show NASMDA Mule & Donkey Show