

NASMDA Mule & Donkey Show Mule & Donkey Ranch Riding

174. Ranch Riding

Ranch riding is a judged event demonstrating the abilities of the animal while working over obstacles found in everyday ranch work.

A. Judging Considerations: Ranch riding is neither a stunt nor a race, but it should be performed at a reasonable speed. The animal should be judged on the quality of gaits, change of leads, and the ability to maneuver through and over the obstacles in a smooth and obedient manner.

1. Credit shall be given for and emphasis placed on a cooperative and obedient attitude in the animal as well as smoothness and even cadence of gaits. All gaits to be performed as described in western terminology.
2. Except for the Junior Mules shown with a hackamore or snaffle bit, one hand only allowed on the reins unless when opening the gate justifies the change of hands. Open and Training Level Donkeys may be shown with two hands with any legal western bit.

B. Scoring: Scoring guidelines are the same as Western Riding, Reining or Trail class when applicable.

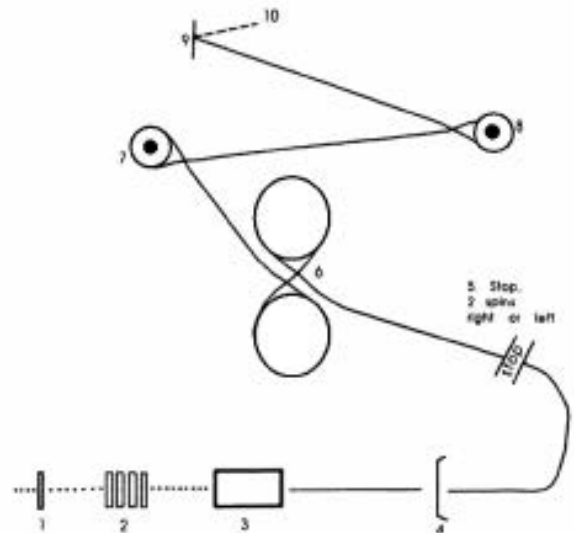
C. Penalties should be assessed each time the following occur:

1. One-half (½) Point Penalties - tick or light touch of log
2. One (1) Point Penalties - hitting or rolling log
3. Three (3) Point Penalties - Breaking of gait at lope
4. Five (5) Point Penalties
 - a. Releasing the gate, unable to complete gate
 - b. Use of free hand to instill fear in mule or donkey
 - c. Failure to complete designated lead change
 - d. Knocking down jump
 - e. Blatant disobedience
 - f. Refusal at obstacle
5. Disqualified (0) – Score
 1. Incorrect order of maneuvers
 2. Knocking over barrels
 3. Passing on wrong side of markers or obstacles
 4. Missing the log
 5. Knocking over the gate

E. Pattern: The long or serpentine line indicates the direction of travel and the gaits at which the animal is to move. The dotted line (. . .) indicates a walk and the solid line (—) indicates lope. It is mandatory to walk over the bridge. No trotting or loping may be required over the bridge.

F. Training Level Donkey Ranch Riding Class Procedure

1. Work gate
2. Walk over logs 20" to 30" apart
3. Walk over bridge
4. Jog to and over 12" jump
5. 1 spin in either direction
6. Proceed at medium trot to figure eight
7. Proceed at extended trot to barrel. Tight fast turn around first barrel.
8. Slide stop and back 5'.



Ranch Riding Pattern

G. Class procedure for Youth, Amateur, Silver Amateur, Junior, Senior and Open Donkey

1. Work Gate
2. Walk Over Logs 20"-30" apart
3. Walk over bridge
4. Slow lope to and over 12" jump (distance between bridge and jump minimum 48' feet. Jump must be a minimum of 10' wide and no PVC is allowed.)
5. Stop and perform 2 spins, right or left
6. Proceed at medium lope to figure eight, showing change of lead from right to left circle.
7. Proceed with speed to barrel. Tight fast turn around barrel on left lead.
8. Proceed with speed to barrel showing change of lead from left to right. Tight fast turn around barrel on right lead.
9. Slide stop and back 10'.

H. The following MAY be added to the JR and SR Pattern

1. Dismount, hobble mule and walk a sufficient distance from animal to show ground tie. Reins should not be dropped. Un-hobble and remount to exit.